

COUNTRY+ ARTS+WA= Annual Report 2011





Cover: Erth Dinosaur Petting
Zoo. Photo provided by
The West Australian.

Art at the Beach Installation
by Sandy McKendrick.
Photo Sandy McKendrick.



Contents

Our Purpose	3
--------------------	----------

Our Priority Areas	3
---------------------------	----------

2011 at a Glance	4
------------------	---

Chair's Welcome	6
-----------------	---

CEO's Welcome	8
---------------	---

Special Projects	10
-------------------------	-----------

Focus Region Initiative	11
-------------------------	----

Out There	14
-----------	----

OPEN YOUR EYES State Regional Arts Conference	16
--	----

Arts and Health Conference	18
----------------------------	----

Campfire Festival	19
-------------------	----

Aboriginal Art Centre Hub of Western Australia	20
--	----

Sand Tracks	22
-------------	----

Performing Arts Touring	25
--------------------------------	-----------

Shows on the Go	27
-----------------	----

Indian Ocean Territories Touring	31
----------------------------------	----

CircuitWest Touring	33
---------------------	----

National Touring	36
------------------	----

Regional Schools Touring	41
--------------------------	----

Share the Risk	45
----------------	----

Louder Contemporary Music Touring	48
-----------------------------------	----

Regional Arts Development	49
----------------------------------	-----------

Annual Funding	51
----------------	----

Regional Arts Fund	53
--------------------	----

Projects and Residencies	55
--------------------------	----

Mentorship Program	58
--------------------	----

Quick Response Grant	60
----------------------	----

Strategic Regional Partnerships	63
---------------------------------	----

Arts Agencies	64
---------------	----

Drug Aware YCulture Regional	65
------------------------------	----

Key Performance Indicators and Audited Accounts	69
--	-----------

Operational Key Performance Indicators	70
--	----

Marketing Key Performance Indicators	73
--------------------------------------	----

Financial Key Performance Indicators	76
--------------------------------------	----

Audited Accounts	78
------------------	----

Board of Management and Governance	101
---	------------

Board of Management	102
---------------------	-----

Role of the Board	110
-------------------	-----

Staff	113
-------	-----

Members	115
---------	-----

Our Supporters	122
----------------	-----







Our Purpose

To empower and inspire regional communities with innovative, relevant and accessible artistic and funding programs in order to build strong, healthy creative communities in Western Australia.

Our Role

Enabling and empowering regional people to develop and enrich their communities through engagement with culture and the arts.

Our Priority Areas

1. Children and Young People
2. Indigenous Arts and Culture
3. Technology
4. Health and Wellbeing

The Man The Sea Saw Going Home. Photo Kathleen Dreier.



2011 at a Glance

Over the last year Country Arts WA...

- co-ordinated ten tours which collectively travelled 173,550km - that's around the world more than four times! Delivered 218 performances and 78 workshops to a total of 36,290 people across the country through touring programs.
- received more than 140 applications for funding through its devolved funding programs with a total request of \$1,088,420. Seventy percent of projects were funded to a total of \$625,947.
- achieved successful results with around 550 attending the inaugural Campfire Festival in Newman held in an ongoing association with BHP Billiton Iron Ore.
- co-ordinated the State Regional Conference, **OPEN YOUR EYES**. Held in September in Geraldton Western Australia with the lasting outcome of the 2029 Manifesto - Concrete Steps to be delivered to Parliament in 2012.



- ➡ the Gascoyne in May concept was piloted with great success, seeing five festivals in the Gascoyne come together on consecutive weekends in May.
- ➡ AACHWA serviced seven Aboriginal arts centres representing over 450 artists, by providing recruitment assistance, advocacy, professional development, information technology and business advisory services.
- ➡ Board of Management collectively volunteered a total of 1,774 hours to the organisation, to a value of \$160,440.





Chair's Welcome




Welcome to Country Arts WA's 2011 Annual Report. I'm delighted to present to you this overview of the work of Country Arts WA during the past year.

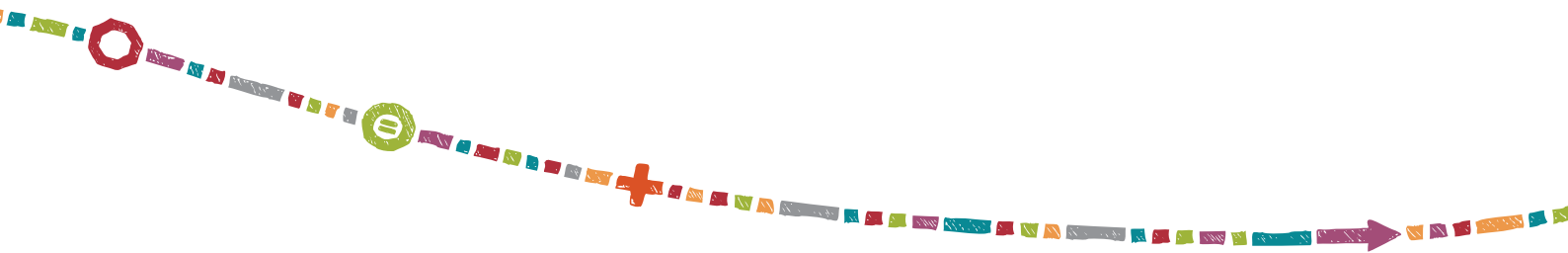
2011 saw one of the largest programs undertaken by the organisation for many years. I congratulate our members, the board and most particularly the Country Arts WA staff for their dedication and sheer hard work in meeting the challenges and achieving the successes that characterised 2011.

The touring team co-ordinated ten tours which collectively travelled 173,550km - that's around the world more than four times! The regional arts development team received more than 140 applications for funding through Country Arts WA's devolved funding programs with a total request of \$1,088,420. Special projects included the Gascoyne Focus Region, Aboriginal Arts Centre Hub WA, Campfire Festival and Sand Tracks.

And of course, Country Arts WA presented its quadrennial Regional Arts Conference Open Your Eyes in Geraldton from 13-16 September.

Over 150 people from all walks of life representing the nine regions of Western Australia gathered in Geraldton. Delegates called for a revitalization of regional arts practices and ideas and Country Arts WA responded by supporting delegates to create the **Manifesto 2029 - Concrete Steps** for regional arts in Western Australia. All ideas and recommendations put forward were recorded and distilled to create an historic 2029 Manifesto to be handed to the Parliament of Western Australia in 2012. This document will serve as a marker in the sand to focus on the ideal regional arts state for 2029.





It was my pleasure to be asked to return as Chairperson of Country Arts WA for a limited term. On behalf of the Board, I thank John McCourt for his leadership during 2010-11. The Board of Management continues to be a passionate and relevant voice and has worked cohesively during the year to ensure the interests of regional Western Australians are looked after. The Board of Management collectively volunteered a total of 1,774 hours to the organisation, to a value of \$160,440.

We were also delighted to celebrate with Jessica the birth of her first child. I would like to take this opportunity to thank Paul MacPhail and Nerida Glanfield for making sure that the organisation continued to flourish under their professional management while Jessica took the time to welcome the new addition to her family.

In 2012, we aim to further position the arts as central to life in regional Western Australia with the handing over of the 2029 Manifesto which will in turn provide the foundation for Country Arts WA's new strategic plan.

Again, my sincere thanks to everyone who has helped make 2011 such a successful year for Country Arts WA and for regional arts in this state.

Suzie Haslehurst

Chair





CEO's Welcome



*"A journey of
a thousand miles
begins with
a single step."*

Lao Tzu

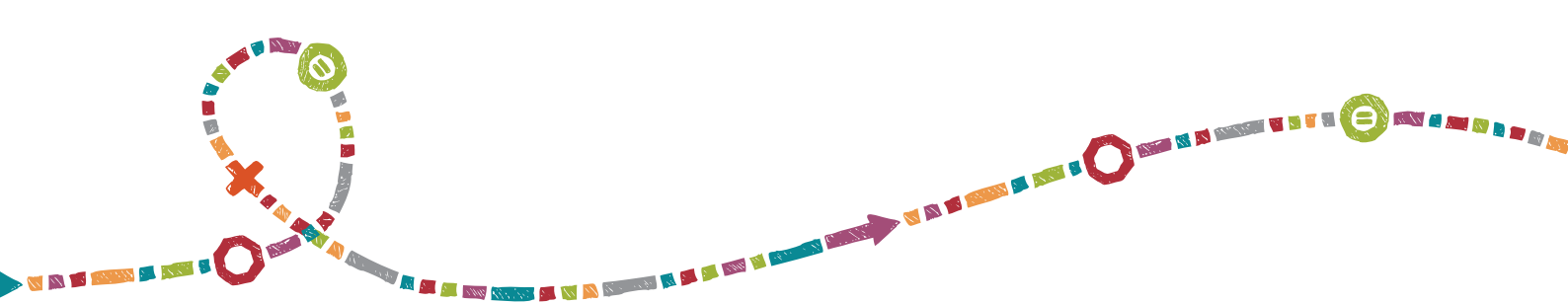
2011 was a huge, challenging and very successful year for Country Arts WA, not only with the delivery of one of our largest touring programs, we also programmed the National Rural Health Alliances arts stream for their National Arts and Health Conference on behalf of Regional Arts Australia, presented the quadrennial state regional arts conference – Open Your Eyes, leveraged over \$600,000 into our Gascoyne Focus Region, launched GascoyneArts – an arts and cultural strategy for the region, welcomed new project partners and an audience development initiative – and two babies were born!

I would like to sincerely thank Paul MacPhail, Nerida Glanfield and Gemma Robins who stepped up into Acting CEO, Acting General Manager and Operations Officer positions whilst I was on maternity leave and the phenomenal staff at Country Arts WA who delivered an incredible 2011 program with grace, humour and passion.

Special thanks must go to Sean Doran who was invited to create the artistic concept for our state conference – Open Your Eyes, to push our boundaries and to ensure we created a lasting legacy. We certainly achieved that with the creation of the 2029 Manifesto – Concrete Steps. A warm thanks to Katrina Thomson the conference Project Manager for her energy, commitment and drive to deliver this event.

It is essential that as a sector we ensure that regional arts stays firmly on the government's agenda at all levels and I believe that the Manifesto will assist us in this journey and also on setting the regional arts agenda for the future.

We continued to focus on priority areas: Indigenous Arts and Culture, Children and Young People, Health and Wellbeing and Technology and lobbied and advocated on behalf of the regional arts sector in Western Australia on a state and national level through Regional Arts Australia.



2011 saw the Federal Government develop and consult on the creation of a National Cultural Policy and the State Government, through the Department of Culture and the Arts, released a progress report in May outlining its priority projects with their Creating Public Value Policy. This included them along with the Department of Regional Development and Lands negotiating the implementation of an additional \$1.25million secured through Royalties for Regions for a boost in performing arts touring.

We welcomed Horizon Power and the Ian Potter Foundation as project partners for Out There, our regional arts youth leadership program, for a three year period in the remote Burringurah Aboriginal Community and also Circuit West and Lotterywest for a three year audience development initiative – which saw Dolores Kinsman join us as the CircuitWest Audience Development Officer.

We said farewell to Megan Roberts, Sarah Thomas-Bird, Josie McGraw, Sofie Lines, and Katrina Thomson and myself and Wendy Carmichael went on maternity leave, we also welcomed new team members – Leah Worthington, Monique Boucher, Celia Ipsen, Jade Stott and Kelly Jennings.

I am continually inspired by the Country Arts WA Board and staff whose combined skills both personally and professionally are essential in achieving the level of quality programs that we run.

Thank you to our funding partners and especially the Department of Culture and the Arts and Lotterywest for their continued support.

The support of all of our partners – and their staff - is very important to Country Arts WA and that along with the important work of our members enables us to continue to brighten and enrich the lives of communities living in regional Western Australia.

Jessica Machin

Chief Executive Officer



Special Projects



The Special Projects stream established in 2009 encompasses new initiatives and entrepreneurial projects instigated by Country Arts WA.

Special Projects from 2011 include:

Focus Region Initiative

The Gascoyne Focus Region Initiative is a partnership between Country Arts WA and the Gascoyne Development Commission. For the period 2010 – 2013 the Gascoyne region will receive focused funding and support to increase community capacity, resources and enthusiasm for arts and culture.

This Initiative delivers direct services and benefits to the region, such as a full-time Gascoyne Regional Arts Development Officer stationed in the region; Out There Youth Arts Development residency program and priority performing arts touring initiatives and funding programs.

The Gascoyne Focus Region Initiative is a partnership between Country Arts WA and the Gascoyne Development Commission. The Initiative receives support from the Regional Arts Fund and the Department of the Prime Minister and Cabinet – Office for the Arts.



Department of
Regional Development and Lands



Australian Government
Regional Arts Fund



HORIZON
POWER



BE ACTIVE





- The April launch of GascoyneArts: an arts and cultural plan for the Gascoyne. Vincent Catania MLA - Member for the North West officially launched GascoyneArts at Gwoonwardu Mi, which was attended by more than 300 community members. Celebrations kicked off with local performers joined by Country Arts WA's touring show Erth Dinosaur. Speeches were intersected by aerial performances from the local aerial troupe, fire show and local band performance.
- The Gascoyne In May initiative was piloted with great success. This took a coordinated and collaborative approach to see five festivals in the Gascoyne come together on consecutive weekends in May as well as the establishment of the Gascoyne In May Committee. The addition of 30 artists from 15 acts also performing across the five festivals, assisted to attract more than 8,000 people.
- Eight field trips to the region were undertaken, including attendance at the launch of the GascoyneArts plan, the GascoyneArts Summit and two tours to connect with each of the Shire Councils and relevant community groups.
- The Measure Up consultant, Duncan Sharp, toured the Gascoyne region from 2 - 14 May, visiting Carnarvon, Coral Bay, Exmouth and Denham, Gascoyne Junction and Burringurrah. Twelve indoor venues and outdoor spaces, were measured up and reported on with recommendations made regarding region-wide infrastructure strategies including the further investigation of portable stages and technical systems.
- The nationally accredited training program, Smart in Business, was attended by four Community Resource Centre Coordinators and four volunteers from the Gascoyne with support from the Gascoyne Development Commission and the Department of Regional Development and Lands. The training was a joint initiative run in partnership with the Community Arts Network WA focusing on Governance and Management practices for small to medium not-for-profit organisations.

- The April launch of GascoyneArts: an arts and cultural plan for the Gascoyne. Vincent Catania MLA - Member for the North West officially launched GascoyneArts at Gwoonwardu Mi, which was attended by more than 300 community members. Celebrations kicked off with local performers joined by Country Arts WA's touring show Erth Dinosaur. Speeches were intersected by aerial performances from the local aerial troupe, fire show and local band performance.
- The Gascoyne In May initiative was piloted with great success. This took a coordinated and collaborative approach to see five festivals in the Gascoyne come together on consecutive weekends in May as well as the establishment of the Gascoyne In May Committee. The addition of 30 artists from 15 acts also performing across the five festivals, assisted to attract more than 8,000 people.
- Eight field trips to the region were undertaken, including attendance at the launch of the GascoyneArts plan, the GascoyneArts Summit and two tours to connect with each of the Shire Councils and relevant community groups.
- The Measure Up consultant, Duncan Sharp, toured the Gascoyne region from 2 - 14 May, visiting Carnarvon, Coral Bay, Exmouth and Denham, Gascoyne Junction and Burringurrah. Twelve indoor venues and outdoor spaces, were measured up and reported on with recommendations made regarding region-wide infrastructure strategies including the further investigation of portable stages and technical systems.
- The nationally accredited training program, Smart in Business, was attended by four Community Resource Centre Coordinators and four volunteers from the Gascoyne with support from the Gascoyne Development Commission and the Department of Regional Development and Lands. The training was a joint initiative run in partnership with the Community Arts Network WA focusing on Governance and Management practices for small to medium not-for-profit organisations.



- * Fieldworx, a nationally recognised arts evaluation organisation, commenced a three year evaluation process of the Gascoyne Focus Region.
- * The Be Active Run Wild Carnarvon Civic Centre Circus, funded through Healthway, saw several circus classes run in Carnarvon and Mungullah from August to December. Ruby Rowat and Dream State Circus each held two week residencies with the circus crew which culminated in a performance at Carnarvon's Mainstreet Christmas Party.
- * Four residencies took place in Burringurrah for the Out There Youth Arts Leadership Program. This included ten artists and five arts workers visiting the community to deliver the program. School participation rates increased by 85% during the residency periods and over 75% of the community attended the end-of-year community celebrations.
- * Country Arts WA received 12 applications from the focus region with a total request of \$112,956.40. Seven applications were awarded a combined total value of \$61,598.40.
- * Four professional performing arts shows from the Country Arts WA touring programs toured within the Gascoyne. These were presented in Exmouth and Carnarvon which saw a total audience of 394 people.
- * The three Shows on the Go tours visited Carnarvon twice and Exmouth and Denham. 665 people watched the three shows in the Gascoyne. Community presenters included the Gascoyne Aboriginal Heritage and Cultural Centre, the Shire of Exmouth and the Exmouth Cultural Arts Centre, the Shire of Shark Bay and the Camel Lane Theatre.
- * The selection of Burringurrah remote Aboriginal community in the Shire of Upper Gascoyne to host the Remote Out There Youth Arts Leadership Program for the next three years.





Out There

Out There is a regional youth arts leadership program designed to increase the opportunity for young people aged 12 to 26. This establishes structures within communities that support young people and the arts by enabling them to get involved, build their sense of place and identity, develop new skills, increase confidence and strengthen community relationships while also increasing confidence and strengthening community relationships.

These outcomes are achieved through a series of residencies in a selected regional Western Australian community over a three-year period. The residencies are run in the art form chosen by the young participants and facilitated and led by the Regional Youth Arts Development Officer and a Creative Producer from CuriousWorks.

The current Out There program host is Burringurrah Remote Aboriginal Community (2011-2013), 480km east of Carnarvon, with the Burringurrah Community Aboriginal Corporation contracted as Program Partners.

Gascoyne Focus Region Initiative Partners



Program Partners





Highlights of the Out There program in 2011 include:

- * Two community members employed to assist in facilitating the Out There program. This included Kristy Riley as a Community Liaison Officer and Jasmin Bittner as a Young Leader.
- * Four residencies were delivered, engaging ten artists over eight weeks of workshops. The workshops were run in art forms including circus arts, digital media, photography, film, shadow puppetry and documentary making. School participation rates increased by 85% during the residency periods.
- * An old classroom was revitalised as a Creative Resource Centre, equipped with ten cameras, one broadcast-quality video camera, five Apple Mac computers and ten personal computers. This centre is now used by 15-20 community members per day.
- * Five community celebrations were held to tribute the young people's work, with the final year celebration attracting more than 75% of the community.
- * Five works were created: A 22 minute community "oral-history" documentary, an eight minute documentary to support a grant application for a community kitchen, two shadow puppet animation movies "Red Dress Girl" and "Burringurrah Story" and one short film "Three Boys Go Hunting"



Open Your Eyes

"Musicircus was a brilliant start to the Open Your Eyes Conference. It is rare for a conference launch to involve so many people from the community in such an innovative and creative way. It was an absolute pleasure to see our community enjoying the forecourt of the Queens Park Theatre, which has never looked so vibrant and alive."

Andrea Selvey, Director of Creative Communities, City of Greater Geraldton

State Regional Arts Conference

As the state's peak body for regional arts, Country Arts WA presented **OPEN YOUR EYES** (literal translation of Abrolhos) in Geraldton from 13 - 16 September 2011.

Lead by internationally renowned Artistic Director Sean Doran, the aim of the 2011 conference was to enable regional people to debate and take responsibility for their role in regional society. Guided by five programming principles (Youth, Aboriginal, Sense of Place, Issue Led and Legacy) **OPEN YOUR EYES** certainly delivered a conference with a difference.

The opening celebrations set the scene with the John Cage project called Musicircus where over 110 local performers ranging in age, ability, and artistic expression participated. This event transformed the theatre's forecourt into a circus for the senses with amazing performances, varied food vendors, and a beautiful light show developing as dusk took over the grounds.

Award winners Hannah Chambers from Boyup Brook (Artseed Youth Award) and Karen Keeley from Narrogin (Leaning Tree Outstanding Contribution Award) were honoured at the conference dinner for their commitment to regional arts.

Rio Tinto and Lotterywest enabled the "Seeding the Future" program which added another cultural dimension to the conference. This included but was not limited to a significant welcome to country, workshops with local Indigenous artists and bringing together all five of the local Indigenous language groups for what we understand to be the first time.

The programming principles fed into nine debate topics each launched with a commissioned discussion paper written by a specialist in the relevant field.



The nine debate themes and authors included:

- | | |
|--|------------------|
| 1. mining, ethics, legacy AND THE ARTS | David Flanagan |
| 2. economy, politics, big business AND THE ARTS | Philippe Legrain |
| 3. technology, democracy, social change AND THE ARTS | Peter Rigby |
| 4. environment, climate change, water, lifestyle AND THE ARTS | John Kinsella |
| 5. suicide, mental well-being, a civil society AND THE ARTS | Louise Helfgott |
| 6. elitism, the bogan within, sports, media AND THE ARTS | Griffin Longley |
| 7. boredom, behave, crime, incarceration AND THE ARTS | Renata Salecl |
| 8. aboriginal culture, guilt, sovereignty, spirituality AND THE ARTS | Charmaine Green |
| 9. racism, multiculturalism, asylum seekers AND THE ARTS | John Sanderson |

These topics were disseminated in two core days of Breakaway sessions where delegates were awarded the rare opportunity to collaborate and have their thoughts and ideas heard in a statewide context. Delegates called for a revitalization of regional arts practices and ideas and Country Arts WA responded by supporting delegates to create a historic 2029 Manifesto – Concrete Steps to be handed to the Parliament of Western Australia in 2012.

OPEN YOUR EYES was considered a success with almost 200 delegates representing the nine regions of Western Australia in attendance and the first steps of the 2029 Manifesto – Concrete Steps completed.

Special thanks to the City of Geraldton Regional Art Gallery and West Australian Museum - Geraldton



Government of Western Australia
Department of Culture and the Arts



RioTinto



City of Geraldton-Greenough
Climate of Opportunity



WorleyParsons
resources & energy



**The West
Australian**

OPEN YOUR EYES Conference. Photo James Thompson.





Arts and Health Conference

Selected by the National Rural Health Alliance, Country Arts WA coordinated the arts and health program for the National Rural Health Conference which was held at the Perth Convention Centre from 13 -16 March.

The overall theme for the conference was 'Rural and Remote Australia – the Heart of a Healthy Nation'. The arts and health program promoted the use of community cultural engagement to generate projects with collaboration between the arts and the health sectors.

The conference showcased regional acts the Walkabout Boys, DADAA's Lost Generation Project, Denmark's moveMENT, and several Perth-based music and physical theatre acts. The program also incorporated an arts and health stream including speakers from Country Arts WA, Community Arts Network WA, Western Desert Kidney Health Project, DADAA and Healthway.

A highlight of the conference was a dance piece choreographed by Denmark choreographer Annette Carmichael and performed by conference delegates.





Campfire Festival

In partnership with BHP Billiton Iron Ore, Country Arts WA toured two Shows on the Go performances to Newman and surrounding communities in July as the first of a proposed annual cultural event.

The project delivered a week of workshops to Newman, Parnngurr and Punmu communities plus the Campfire Festival in Newman featuring Erth's Dinosaur Petting Zoo, Project X and local band 95 North.

An advisory group was established to ensure community participation in the planning and development of the event.

Originally slated to be a small cultural event to focus on performing arts in the Newman Art Park, the event became a much larger festival on the Newman Rugby Oval when Bloodwood Tree Association joined forces to celebrate NAIDOC Week with Northam band Pipeline.

RAW Dance and Erth delivered 46 workshops to 929 students and young people in Newman Primary School, South Newman Primary School, Newman Senior High School, Rawa Community School, Parnngurr Community School and Follow the Dream in Newman, Punmu and Parnngurr and held the Campfire Festival in Newman to an estimated audience of 550.



Campfire Festival cake created by a community member. Photo Simon O'Leary.





Aboriginal Art Centre Hub of Western Australia

Aboriginal Art Centre Hub of Western Australia (AACWHA) is the peak advocacy and resource agency for seven Aboriginal art centres servicing 32 regional communities and over 450 artists located in the Great Southern, Mid West, Goldfields-Esperance and Pilbara regions of WA.

AACHWA's primary objective is to support and promote Aboriginal art centres located in Western Australia with the aim of encouraging sustainable growth and stability. AACHWA supports the development of art centres by providing professional development opportunities and coordinating services and resources.

AACWHA is part of the national network of peak bodies that support and advocate for Aboriginal and Torres Strait Islander Art Centres. AACHWA is guided by an Aboriginal advisory group composed of representatives from each of the AACHWA art centre members.



ABORIGINAL ART CENTRE HUB
Western Australia



In 2011 AACHWA provided support and services to its members including:

- * Tailored manager recruitment and induction assistance
- * Remote IT support services
- * Two and a half day Art Centre Manager's Conference focusing on industry updates and information, developing gallery relationships, and materials handling and conservation
- * Reference group input, advocacy and on the ground assistance for the Revealed Emerging Indigenous Artists' Showcase
- * Three day Governance workshop of art centre boards
- * Monthly e-news distributed to subscribers
- * Monthly 'media feed' (relevant articles published on Indigenous art visual arts industry) to AACHWA members

Read more about AACHWA at www.aachwa.com.au





Sand Tracks

Sand Tracks is Country Arts WA's remote Indigenous contemporary music touring initiative. Sand Tracks is designed to profile and further develop Aboriginal artists, build remote Indigenous and non-Indigenous audiences as well as build community capacity through partnering and delivering a workshop component.

The 2011 Sand Tracks program presented Arnhemland legends Nabarlek, who toured the central desert region with emerging artists Sunshine Reggae Band.

Sand Tracks travelled 6,525 km across three states and employed 16 people over 28 days.

Nabarlek formed in 1985 using two busted acoustic guitars and upturned flour tins. They have since performed with Yothu Yindi, supported Midnight Oil and played with Silverchair and Powderfinger on their Across the Great Divide national tour. As well as their two Shows on the Go tours in 2004 and 2008 they have toured nationally and internationally on several occasions. Their music reflects the strong traditional beliefs and customs of the rock country people of central Arnhemland seems to instantly connect with people from remote communities everywhere.

The members of Sunshine Reggae Band are from Ikuntji in the Northern Territory and play their desert reggae-driven songs in both Luritja and English. The lyrics are often about their homeland and country, Dreamtime, staying healthy and keeping off the grog.

Both bands were very proud to be inspiring the next generation of musicians in the central desert region through their performances and workshops. The touring party travelled 3,435km through the central desert region on top of the combined 3,090km they travelled to and from the start and the end of the tour.





The bands played to some 4,168 people over five performances and provided 29 workshops to 173 participants.

Sand Tracks 2011: Nabarlek and the Sunshine Reggae Band toured to:

Town	State	Locally presented by
Alice Springs	NT	Bush Bands Bash and RedHOT Arts
Amata	SA	Amata Community Council
Yulara	NT	Artback NT and Ayers Rock Resort*
Wanarn	WA	NG Media and Shire of Ngaanyatjaraku
Warburton	WA	Wilurarra Creative and Shire of Ngaanyatjaraku

* Indicates a new presenter

Sand Tracks touring is made possible through support from the State of Western Australia through the Department of Culture and the Arts, Department of the Prime Minister and Cabinet- Office for the Arts, Country Arts SA, Australia Council for the Arts and producers Skinnyfish Music and CAAMA Music.



Government of **Western Australia**
Department of **Culture and the Arts**



Australian Government
Department of the Prime Minister and Cabinet
Office for the Arts



country
arts sa



Smokefree WA



Nabarlek and Sunshine Reggae Band on the road. Photo Matt McHugh.



Sand Tracks – NG Music Festival in Wanarn. Photo Matt McHugh.

Performing Arts Touring





Country Arts WA's performing arts touring programs delivered professional performing arts across the state and nationally this year including a tour to the extremely remote regions of the Indian Ocean Territories (Christmas and Cocos (Keeling) Islands) and the Ngaanyatjarra Lands at the state border.

Through the Country Arts WA touring programs: Shows on the Go, Sand Tracks, CircuitWest, Indian Ocean Territories, Regional Schools Touring and National Touring, a total of 13 productions were toured which collectively traveled 186,452 km to deliver 246 performances and 193 workshops to a total of 40,578 people in 140 communities.

Across all tours Country Arts WA employed 72 performers, crew and tour managers who were on the road for a total of 451 days of touring.

Continued involvement in the national Blue Heeler National Touring Network ensured Western Australian producers were able to tour their work interstate with support from Playing Australia.

The Sand Tracks remote Indigenous contemporary music touring initiative coordinated another successful cross-border across three states, touring through Alice Springs (NT), Amata (SA), Warburton (WA) and Wannarn (WA).

In line with the organisation's Indigenous arts and culture priority area, the touring program employed 16 Aboriginal artists and crew across all tours.

The performing arts funding programs Louder contemporary music touring program and Share the Risk, a guarantee-against-loss program, were once again offered to regional organisations.

All of these programs aim to provide regionally based people with greater access to professional performing arts and to enhance the cultural life of regional Western Australians.



Shows on the Go

Designed to ensure that small communities in regional Western Australia have access to high quality performing arts experiences, the Shows on the Go tours are affordable and self-sufficient. To ensure the productions can be presented in a wide variety of performance spaces they travel with all of the required technical equipment.

Shows on the Go is a community-driven touring model with regional communities voting on shows listed in the annual Touring Menu and online via www.cyberpaddock.com.au. Shows are then short-listed for selection thus ensuring that the Shows on the Go touring program reflect the choices of regional audiences.

Country Arts WA undertakes all aspects of tour coordination including itinerary development, contracting with producers and community groups (presenters), accommodation bookings, vehicle hire, on-road tour management and marketing support. Regional community presenters are responsible for local presentation and marketing activities as well as guaranteeing performance fees and royalties. This responsibility creates a strong commitment to each touring production at a local level.

In 2011 the three Shows on the Go tours travelled 36,566 km, employed 20 performers and crew, performed 38 times to a total audience of 6,989 people and delivered 20 workshops to 489 participants.

Shows on the Go touring is made possible through support from the State of Western Australia through the Department of Culture and the Arts, Lotterywest, Healthway promoting a SmokeFree WA and media partners WIN Television and ABC Local Radio.



Government of Western Australia
Department of Culture and the Arts



Smokefree WA



ABC
Local Radio





*"Fun, educational,
wonderful for the
kids and adults
and inexpensive.
Thankyou so much!"*
Louise from Balingup

*"Very surprising I
really enjoyed it, you
made me feel like a
big kid!"*

Onslow Audience Member

*"Was fantastic!
Absolutely worth the
three-hour drive from
Newman!"*

Jodie McGinnis from
Newman travelled to
Tom Price to see the
performance.

Erth Dinosaur Petting Zoo

Toured 29 March – 28 April 2011

Travelled 9,923km and employed 5 people over 27 days

It's a petting zoo, but not as you know it!

A unique show that allows lots of children and adult interaction while they journey with the Erth performers through prehistoric Australian paleontological history to see amazing dinosaurs and creatures that inhabited the landscape millions of years ago.

Children help feed the dinosaurs, pat the babies and risk their lives by putting their head in the mouth of Choko the T-Rex

Produced by Erth, the Dinosaur Petting Zoo performed to a total audience of 4,502 people in 14 communities with an average of 281 people per performance. Six workshops were held which attracted 98 participants.

Erth Dinosaur Petting Zoo toured to:

Community

Tammin
Darkan
Balingup
Albany
Hopetoun
Esperance
Kalgoorlie
Merredin
Northam
Shark Bay
Carnarvon
Onslow
Paraburdoo
Tom Price

Presenter

Shire of Tammin
Shire of West Arthur
Balingup Progress Association*
Western Australian Museum
Ravensthorpe Regional Arts Council
Esperance Civic Centre
Goldfields Art Centre
Cummins Theatre
Avon Youth Services*
Shire of Shark Bay and Shark Bay Arts Council
Shire of Carnarvon
Shire of Ashburton
Karingal Neighbourhood Centre
Shire of Ashburton

**indicates new presenter*



Project X

Toured 6 June - 2 July 2011

Travelled 13,563km and employed 12 people over 27 days

It's hot! It's explosive! It's non-stop thrills! It's a night of high-energy dance and thumping music.

Project X is funk, tap, acrobatics, live music, percussion and beat boxing combined. The show wowed audiences across the state. The athleticism, ingenuity and charisma of the incredible dancers had audiences jumping in their seats. It was all set to energetic live funk, techno and Latin music the amazing sounds of beatboxer Dr Rhythm.

Produced by Raw Dance Company, Project X performed to a total audience of 1,928 people in 11 communities with an average of 175 people per performance. Fourteen workshops were held which attracted 391 participants.

Project X toured to:

Town

Mandurah
Boddington
Ravensthorpe
Northam
Moora
Karratha
Tom Price
Paraburdoo
Port Hedland
Fitzroy Crossing
Derby

Locally presented by

Mandurah Performing Arts Centre
Boddington Community Resource Centre
Ravensthorpe Regional Arts Council
Avon Youth Services
Shire of Moora
Shire of Roebourne*
Shire of Ashburton
Karingal Neighbourhood Centre
Town of Port Hedland
Shire of Derby-West Kimberley and Hawk Now*
Shire of Derby-West Kimberley and Hawk Now

**indicates new presenter to Shows on the Go*

"Fantastic. Wish I was 20 again!"

Mandurah
Audience Member

"This was so cool. I want to see it every day."

Zaine, Derby

Project X on stage. Image provided by Raw Dance Company.





Damian Callinan in The Merger

Toured 1 – 29 August 2011

Travelled 14,476km and employed three people over 29 days

The town of Bodgy Creek has seen better days. The mill's closed, the Tidy Town sign has fallen into the grass and the weir is as dry as a spinster's gusset.

Unable to field even one side, the footy club will either have to fold or merge with their arch rivals. But prodigal son coach Troy Carrington has other ideas. To save the club and serve his socially aware agenda, he recruits players from the Asylum Seekers Refuge Centre.

Produced by Dirty Work Comedy, Damian Callinan in The Merger performed to a total audience of 559 people in 12 communities.

The Merger toured to:

Town	Locally presented by
Broome	Kimberley Performing Arts Council
Port Hedland	Matt Dann Cultural Centre
Newman	Newman Mainstreet Project*
Exmouth	Exmouth Cultural Arts Centre*
Carnarvon	Shire of Carnarvon
Cervantes	Cervantes Football and Country Club* & Jurien Bay Community Resource Centre*
Merredin	Shire of Merredin
Thornlie	City of Gosnells
Bunbury	Bunbury Regional Entertainment Centre
Esperance	Esperance Civic Centre
Hopetoun	Ravensthorpe Regional Arts Council
Mandurah	Mandurah Performing Arts Centre

*indicates new presenter to Shows on the Go

"Versatile and very funny with some poignant points."

Maree, Broome

"A great night of laughs, typical of battling small town clubs!"

Lindsay and Di,
Carnarvon

"I had belly laughs all night, I needed that! Thank you."

Andrew, Merredin

Damian Callinan in The Merger in Newman. Photo Jenna Boston.



Indian Ocean Territories Touring

Country Arts WA delivers tours to Christmas and Cocos (Keeling) Islands on behalf of the Commonwealth Attorney-General's Department.

Indian Ocean Territories (IOT) touring is a presenter-driven touring model, similar to Shows on the Go striving to ensure that everyone has access to quality performing arts regardless of their locality.

Indian Ocean Territories touring is made possible with the support of the Australian Government through the Attorney General's Department, and the State of Western Australia through the Department of Culture and the Arts.



Government of **Western Australia**
Department of **Culture and the Arts**





Loop the Loop

Travelled 6,343km and employed five people over 17 days

Master musician Gene Peterson, goes head to head with multi-instrumentalist Adam Page in this phenomenal musical battle. This 100 minute jam-packed performance provides the audience with a plethora of amazing skills, from simultaneously playing keyboards and drums, to Tibetan throat singing and using a carrot as a musical instrument!

As each artist attempts to out-play the other with their multitude of musical abilities, they continually record their music into a loop pedal, creating the aural illusion of an entire band playing live!

Sometimes quirky, often hilarious but always impressive, 'Loop the Loop' offers a terrific night of entertainment.

Produced by Onyx Productions, Loop the Loop performed to a total audience of 407 people in four communities with an average of 102 people per performance. Three workshops were held which attracted 160 participants.

Loop the Loop toured to:

Town

Cocos (Keeling) Island
Christmas Island

Locally presented by

Cocos Club Inc
Arts & Culture Christmas Island

Images: Mal Webb plays the carrot in Loop the Loop on Cocos Island. Photo: Catherine Green.



CircuitWest Touring

CircuitWest is the network of professionally managed performing arts venues in regional Western Australia. Country Arts WA maintains a strong working relationship with the network, ensuring that regional communities are serviced through both state and national touring strategies.

In 2011, Country Arts WA employed an Audience Development Project Officer to assist the venues with strategies to encourage new and existing audiences to come to their venue. This project has a particular focus on supporting venues to develop audiences who are currently not attending the venue due to social, economic or distance related issues.

In 2011 Country Arts WA coordinated two tours on behalf of the CircuitWest network – Honey Spot and The Man the Sea Saw.

CircuitWest touring is made possible through support from the State of Western Australia through the Department of Culture and the Arts, Lotterywest and media partners ABC Local Radio.



Government of **Western Australia**
Department of **Culture and the Arts**



ABC
Local Radio





Honey Spot

Travelled 5,351km and employed seven people over 23 days

Honey Spot is a play about two cultures living together, about two different philosophies on land conservation and about how friendship can overcome racial differences. One of Jack Davis' most celebrated theatrical works, Honey Spot is a piece of quality Indigenous theatre for all ages.

Produced by the Yirra Yaakin Theatre Company, Honey Spot performed to a total audience of 1,232 people in 12 communities with an average of 103 people per performance.

Loop the Loop toured to:

Town

Esperance
Kalgoorlie
Merredin
Mandurah
Moora
Geraldton
Carnarvon
Karratha
Port Hedland

Locally presented by

Esperance Civic Centre
Goldfields Arts Centre
Shire of Merredin
Mandurah Performing Arts Centre
Shire of Moora
City of Geraldton Greenough
Shire of Carnarvon
The Walkington Theatre
Matt Dann Cultural Centre

Honey Spot on stage. Photo Jon Green.



The Man the Sea Saw

Travelled 2,937km and employed four people over 16 days

Taking place on and around a swaying, icicle-clad stage, this breathtaking performance combines physical theatre artist Wolfe Bowart's deft and dance-like physicality with circus, comedy, puppetry, stage illusion, audience interaction and a poignant story.

Wolfe Bowart turns the world as we know it upside down and sideways in The Man the Sea Saw.

Produced by Spoon Tree Productions, The Man the Sea Saw performed to a total audience of 1,676 people across seven performances with an average of 239 people per performance.

The Man the Sea Saw toured to:

Town

Bunbury
Karratha
Carnarvon
Geraldton
Margaret River
Mandurah
Albany
Esperance

Locally presented by

Bunbury Regional Entertainment Centre
** Cancelled due to flooding
** Cancelled due to shipping delays
Queens Park Theatre
Arts Margaret River
Mandurah Performing Arts Centre
Albany Entertainment Centre
Esperance Civic Centre





National Touring

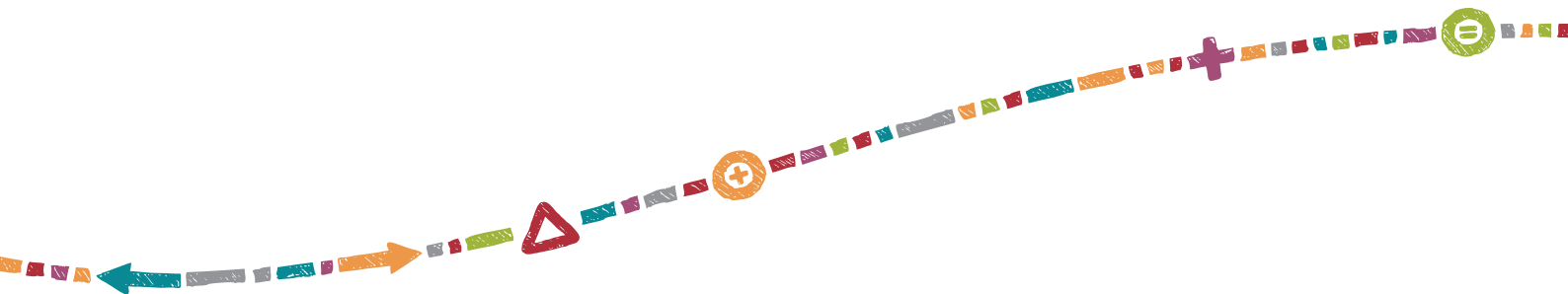
The National Touring program ensures regional Western Australian presenters and audiences have access to quality performing arts experiences as well as providing Western Australian producers with opportunities to build a national profile and tour interstate.

Country Arts WA is the Western Australian representative of the Blue Heeler National Touring Network, the peak industry alliance for national performing arts touring support, facilitation and coordination across Australia.

The Blue Heelers manage the Cyberpaddock website and coordinate the biannual Long Paddock touring forums, where producers and presenters from around the country meet to refine proposals for touring productions within regional Australia. Together these mechanisms provide an accessible and sophisticated tour development system that forms the basis of funding applications to Playing Australia, the Australian Government's national performing arts touring program.

Country Arts WA developed two applications for touring in 2012 and both were successful. These include Bindjareb Pinjarra by Deckchair Theatre and the Pinjarra Project and What A Mans Gotta Do, by Andrew Horabin and Beyond the Threshold.

In September Country Arts WA hosted the Long Paddock at the State Theatre Centre in Perth on behalf of the Blue Heeler Network and Regional Arts Australia. This was held alongside the 25th Australian Performing Arts Centres Association (APACA) Performing Arts Conference and the Australia Council for the Arts Marketing Summit. The Long Paddock had 192 delegates attend and 31 productions were pitched by 27 production companies.



Country Arts WA also continued to represent the interests of regional Western Australian presenters through attendance at the APACA conference and participation in the Performing Arts Touring Alliance (PATA).

PATA is Australia's peak body for the performing arts touring sector. It is a cohesive and objective voice for government and key stakeholders, providing quality and informed strategic advice and policy.

National touring is made possible through support from the Australian Government's national performing arts touring program, Playing Australia, which gives Australians across the country the opportunity to see some of Australia's best performing arts. The state representatives of the Blue Heeler Network are members of Regional Arts Australia.





The Man the Sea Saw

Travelled 14,744km across four states and employed four people over 89 days.

Taking place on and around a swaying, icicle-clad stage, this breathtaking performance combines physical theatre artist Wolfe Bowart's deft and dance-like physicality with circus, comedy, puppetry, stage illusion, audience interaction and a poignant story.

Wolfe Bowart turns the world as we know it upside down and sideways in The Man the Sea Saw.

Produced by Spoon Tree Productions, The Man the Sea Saw performed to a total audience of 9,797 people across 46 performances with an average of 213 people per performance.

The Man The Sea Saw toured to:

Town

Devonport, TAS
Hobart, TAS
Sale, VIC
Warburton, VIC
Warragul, VIC
Colac, VIC
Moonee Ponds, VIC
Ballarat, VIC
Hamilton, VIC
Wollongong, NSW
Orange, NSW
Bathurst, NSW
Dubbo, NSW
Taree, NSW
Gosford, NSW
Nowra, NSW
Parramatta, NSW
Sydney, NSW
Maryborough, QLD
Caloundra, QLD
Gold Coast, QLD

Locally presented by

Devonport Entertainment Centre
Theatre Royal
Esso BHP Billiton Wellington Entertainment Centre
Upper Yarra Arts Centre
West Gippsland Arts Centre
Colac Otway Performing Arts Centre
Clocktower Centre
Her Majesty's Theatre
Hamilton Performing Arts Centre
Illawarra Performing Arts Centre
Orange Civic Theatre
Bathurst Memorial Entertainment Centre
Dubbo Regional Theatre and Convention Centre
Manning Entertainment Centre*
Laycock Street Theatre
Shoalhaven Entertainment Centre*
Riverside Theatres
Seymour Centre
Brolga Theatre
The Events Centre
The Arts Centre Gold Coast

*indicates new presenter



The Adventures of Alvin Sputnik: Deep Sea Explorer

Travelled 88,589km across six states and employed three people over 82 days
From international multi-award winning theatre company Weeping Spoon Productions comes a visually inspired solo show using a unique blend of mime, puppetry and transformative animation.

The seas have risen, billions have died and those who remain live on farms, on top of skyscrapers and on top of mountains. It is up to Alvin Sputnik to venture through the mysterious depths to find a place for the human race to live in peace once more.

Produced by Perth Theatre Company/Weeping Spoons, Alvin Sputnik: Deep Sea Explorer performed to a total audience of 5,196 people across 64 performances with an average of 81 people per performance.

The Adventures of Alvin Sputnik: Deep Sea Explorer toured to:

Town

Ceduna, SA
Port Lincoln, SA
Port Augusta, SA
Tanduna, SA
Murray Bridge, SA
Noarlunga, SA
Naracoorte, SA
Lameroo, SA
Mildura, VIC
Werrimul, VIC
Swan Hill, VIC
Castlemaine, VIC
Canberra, ACT
Woy Woy, NSW
Brisbane, QLD
Logan City, QLD
Caloundra, QLD
Byron Bay, NSW
Sydney – Potts Point, NSW
Sydney – Campbelltown, NSW
Geelong, VIC
Hobart, TAS
Williamstown, VIC
Darebin, VIC
Williamstown, VIC

**indicates new presenter*

Locally presented by

Country Arts SA
Country Arts SA
Country Arts SA
Country Arts SA
Country Arts SA
Country Arts SA
Country Arts SA
Country Arts SA
Country Arts SA
Mildura Arts Centre
Mildura Arts Centre
Swan Hill Rural City Council
Castlemaine State Festival
The Street Theatre
Laycock Street Theatre
Judith Wright Centre of Contemporary Arts
Logan Entertainment Centre
The Events Centre
Northern Rivers Performing Arts
Darlinghurst Theatre
Seymour Centre
Geelong Performing Arts Centre
Theatre Royal
Esso BHP Billiton Wellington Entertainment Centre
Darebin Arts and Entertainment Centre
Hobsons Bay City Council *

Krakouer!

Travelled 2,495km across five states and employed five people over 71 days
Mount Barker's most famous sons, Jim and Phil Krakouer took the Australian football world by storm in the early 1980s. Their unique and anarchic brand of football, dubbed 'black magic', captured the imagination of the nation.

This is the story of the challenges they faced in their rise to the top of their game, their skill, daring and resilience both on and off the sporting field and the controversy and adversity that has met them throughout their lives. This is more than a tale of football prowess. This is about two 'brother boys' who fought with and for each other against racial vilification, gambling addiction, an unforgiving legal system and personal tragedy.

Produced by Deckchair Theatre, Krakouer! performed to a total audience of 6003 people across 42 performances with an average of 143 people per performance.

Krakouer! toured to:

Town

Mackay, QLD
Ipswich, QLD
Sydney, NSW
Orange, NSW
Wagga Wagga, NSW
Sale, VIC
Frankston, VIC
Altona, VIC
Moonee Ponds, VIC
Geelong, VIC
Launceston, TAS
Werribee, VIC
Colac, VIC
Warrnambool, VIC
Horsham, VIC
Bendigo, VIC
Albury, NSW
Swan Hill, VIC
Renmark, SA
Whyalla, SA
Port Lincoln, SA

Locally presented by

Mackay Entertainment & Convention Centre
Ipswich City Council
Seymour Centre
Orange Civic Theatre
Wagga Wagga Civic Theatre
Esso BHP Billiton Wellington Entertainment Centre
Frankston Arts Centre
Hobsons Bay City Council
Clocktower Centre
Geelong Performing Arts Centre
Theatre North
Wyndham City Council
Colac Otway Performing Arts & Cultural Centre
Warrnambool City Council
Wesley Performing Arts & Cultural Centre *
The Capital – Bendigo's Performing Arts Centre
Albury Entertainment Centre
Swan Hill Rural City Council
Country Arts SA
Country Arts SA
Country Arts SA

*indicates new presenter



Regional Schools Touring

The Regional Schools Touring program aims to ensure that regional Western Australian schools have access to professional performing arts activities. Country Arts WA works in partnership with Barking Gecko Theatre Company, Spare Parts Puppet Theatre, Yirra Yaakin Theatre Company and Buzz Dance Theatre to deliver the Regional Schools Touring program.

Together these companies have developed a three-year plan to ensure that the delivery of productions is equitable across the state. Funding support from Healthway ensures that tours reach the Kimberley, Pilbara and Gascoyne regions where touring costs are greatly increased.

Country Arts WA plays a strategic role to ensure that the program reaches the widest possible audience and to monitor the effective use of funds.

Collectively, three schools touring companies delivered 28 performances to 2564 students and conducted 102 workshops to 1724 participants.

Regional Schools Touring is made possible through support from the State of Western Australia through the Department of Culture and the Arts and Lotterywest and Healthway.



Government of **Western Australia**
Department of **Culture and the Arts**





The Red Tree

Travelled 3000km across 15 communities and employed three people over 18 days

The Barking Gecko Theatre Company presented a magical adaption of Shaun Tan’s award winning picture book The Red Tree, transporting audiences to a strange world of peculiar creatures and dreamlike landscapes. Directed by John Sheedy, written by Shaun Tan the Red Tree featured live music, original score, a stunning lighting design and a magical set.

Produced by Barking Gecko Theatre Company The Red Tree delivered 22 performances to 2,341 people across three Western Australian regions. The Red Tree toured to:

Venue	Community	Region
Peter Carnley Community School	Mandurah	Peel
Charthouse Primary School	Mandurah	Peel
Boddington District High School	Boddington	Peel
St Anne’s School	Harvey	South West
Collie Senior High School	Collie	South West
South Bunbury Education Support	South Bunbury	South West
Bunbury Cathedral Grammar	Bunbury	South West
Donnybrook District High School	Donnybrook	South West
St Mary’s School, Donnybrook	Donnybrook	South West
Pemberton District High School	Pemberton	South West
Georgiana Molly Anglican School	Busselton	South West
Walpole Primary School	Walpole	South West
South Stirling Primary School	South Stirling	Great Southern
Bremer Bay Primary School	Bremer Bay	Great Southern
Great Southern Grammar	Kalgan	Great Southern
Wellstead Primary School	Wellstead	Great Southern
Albany Senior High School	Albany	Great Southern
Woodbury Boston Primary School	Albany	Great Southern



Swashbuckled

Travelled 4000 km and employed two people over 18 days

The tour was delayed due to rain but still delivered great performances to enthusiastic audiences across the Kimberley region.

Just as William Dampier himself toured the remote areas of Western Australia – so too did Mark Storen dressed as the famous William Dampier.

Based on factual research and consultation with the Museum of Western Australia this show is a smorgasbord of delicious classroom activities and discussions while also being very, very funny!

Puppet making workshops accompanied Mark on this voyage of discovery.

Produced by Spare Parts Puppet Theatre, Swashbuckled delivered six performances to 223 people and six workshops to 183 participants.

Swashbuckled toured to:

Venue	Community	Region
Doon Doon Station	Dawul	Kimberley
St Joseph's Primary	Wyndham	Kimberley
Wannalirri Catholic School	Wannalirri	Kimberley
Wananami Remote Community School	Wananami	Kimberley
Wangkatjunga Remote Community School	Wangkatjunga	Kimberley
Muludja Remote Community School	Muludja	Kimberley



Big Stretch

Travelled 5902 km and employed eight people over 32 days

Big Stretch is designed for remote communities. The program engages with and enriches the lives of Indigenous and non Indigenous children living in remote and often disadvantaged communities, enriching their academic curriculum, igniting their imagination and building capacity for the future. The program provides a holistic multi-art workshop approach and has the capacity to build communities through ongoing professional development.

Produced by Buzz Dance Theatre and directed by Cadi McCarthy, Big Stretch delivered 96 workshops to 1,501 participants.

Big Stretch toured to:

Venue	Community	Region
Broome Senior High School	Broome	Kimberley
St Mary's Broome	Broome	Kimberley
Bayulu Remote Community School	Bayulu	Kimberley
Yaramali Community	Yaramali	Kimberley
Kulkurrya Community	Kulkurrya	Kimberley
Wangkatjunka community	Wangkatjunka	Kimberley
Fitzroy District High School	Fitzroy Crossing	Kimberley
Martu Education Group	Newman	Pilbara
Jigalong School	Jigalong	Pilbara
Warralong School	Warralong	Pilbara
Hedland Senior High School	Port Hedland	Pilbara
Bayler Primary School, Port Hedland	Port Hedland	Pilbara
Port Hedland Community Theatre	Port Hedland	Pilbara
Jabat Dance School	Port Hedland	Pilbara



Share the Risk

Share the Risk is a guarantee-against-loss program designed to assist regional Western Australian communities to present professional performing arts events by underwriting some of the costs. The fund covers losses associated with unexpected events such as bad weather, a change in farming schedules or an unforeseen community occurrence, up to an agreed amount.

In 2011, requests to the Share the Risk fund totalled \$61,127. Of the \$41,127 committed by the Touring Assistance Panel \$25,585, or 62%, of this amount was drawn on by applicants.

Share the Risk is supported by Lotterywest and in 2011 supported the following performing arts events:



*Marriage of Figaro by CoOpera. Photo provided by Denmark Arts.
Opposite page: Cadi McCarthy, AD from Buzz Dance teaching dance workshops in Bayulu
Photo Yirra Yaakin Theatre Company. Photo Renee Newman.*





Ravensthorpe Regional Arts Council

Erth Dinosaur Petting Zoo | Goldfields-Esperance

To present Shows on the Go performance of Erth's Dinosaur Petting Zoo in Ravensthorpe.

Committed: \$1,900.00 Required: nil

Festival of the Wind

Claire Bowditch at the Sound Shell | Goldfields-Esperance

As part of the Festival of the Wind 2011, Aria Award winning Clare Bowditch and the New Slang headlined in Esperance at the Soundshell.

Committed: \$10,000.00 Required: \$8,338.00

Tropicool Festival

Cabaret Ball | Gascoyne

A cabaret themed ball held at the Woolshed with a funk band, comedy circus acts and DJ as the opening of the annual Tropicool Festival.

Committed: \$5,232.00 Required: \$2,634.00

Boddington Community Resource Centre

Project X | Peel

To present the Shows on the Go performance of Project X in Boddington.

Committed: \$3,350.00 Required: \$3,350.00

Ravensthorpe Regional Arts Council

Project X | Goldfields-Esperance

To present the Shows on the Go performance of Project X in Ravensthorpe.

Committed: \$3,350.00 Required: \$2,207.00



Recorder Early Music Society WA

The Music of 1750 | Wheatbelt

To present leading Early Music artists to perform a concert of Baroque recorder music related to the 1750s on historical period instruments at the newly restored Northam Town Hall, to celebrate the 175th Anniversary of the gazettal of Northam.

Committed: \$4,719.00 Required: \$4,719.00

Denmark Arts Yellow

The Yellow Wallpaper | Great Southern

To present The Yellow Wallpaper, a play based on the 1892 short story by Charlotte Perkins Gilman, adapted by Denmark local Silvia Lehmann and Teresa Izzard, with original writing by Silvia Lehmann. Devised and performed by Perth's Movementworks in Denmark.

Committed: \$2,088.00 Required: nil

Beverley Art Gallery Society

Harvest Festival Concert | Wheatbelt

A concert to precede the annual Harvest Festival at the new Beverley Platform Theatre, completed in late 2010.

Committed: \$6,458.00 Required: \$2,864.00

Denmark Arts Council

The Marriage of Figaro | Great Southern

Co-Opera returns to Denmark to perform Mozart's 'The Marriage of Figaro' at the Denmark Civic Centre as part of their Australian tour.

Committed: \$4,030.00 Required: \$1,473.00





Louder Contemporary Music Touring

The Louder Contemporary Music Touring Program aims to encourage the development of original contemporary music in regional Western Australia. Country Arts WA works with contemporary music organisations to develop projects that achieve developmental outcomes for regional communities, with a focus on developing musicians, audiences and venues.

The West Australian Music Industry Association Inc \$30,000.00

The 2011 WAMi Festival – Wheatbelt Tour

The 2011 WAMi Festival regional tours were again a very successful element of the WAMi Festival. In 2011, ten shows were presented on two separate tours throughout the Wheatbelt region between 12 and 22 May to over 1000 audience members.

Two bands were featured on each tour, the first visiting Northam, Merredin, Narrogin and Quindanning featuring Perth act Split Seconds (nominated for seven WAMi awards) and Minute 36 who hail from Albany in the Great Southern region. The second tour visited Lancelin, Jurien Bay, Dalwallinu and Wongan Hills and featured Perth acts The Panda Band and Ruby Boots (nominated for two WAMi awards). Across the tour 11 local Wheatbelt acts were showcased during the performances.

Louder is made possible through support from the State of Western Australia through the Department of Culture and the Arts. In 2011 Louder supported The West Australian Music Industry Association with \$30,000 for the Wheatbelt tour of their 2011 Festival.

“Just wanted to say again how good it was to have you guys out in Merredin last Friday. I’m a massive music fan and it’s a very rare occasion that we get current original music out of Perth and into the Wheatbelt and I amongst others who attended were really grateful for the experience. It was also good to see a local band in Vanilla Pills get that opportunity for the bill.”

Jayden Crook, Merredin.



Government of **Western Australia**
Department of **Culture and the Arts**



Regional Arts Development





In 2011 Country Arts WA continued to administer several funds including the Regional Arts Fund, YCulture Regional and Annual Funding working closely with all applicants to develop the best possible arts outcomes for their community.

This year the Regional Arts Development team had one-on-one meetings to develop Regional Arts Fund applications with 48 people and held ten information sessions. These promoted the funding programs to a total of 178 people during field trips across the Gascoyne, South West, Peel, Goldfields-Esperance, Pilbara, Mid West and Wheatbelt regions.

The team responded to on average 18 calls a week from regional communities enquiring about funding – that is on average 936 calls a year! Project Officers also spent on average 184 hours assisting applicants in developing their applications.

More than 144 applications were received to a total request of almost \$1,088,420 dollars. Nearly 70% of applications received were successful to a total request of almost \$625,947 dollars. At least one organisation from each of the nine regions of the state received funding.

2011 was also the second year of triennial contracts through the Annual Funding program for the previously selected six Peak arts organisations and the four Regional Arts Fund supported organisations; Shire of Halls Creek, Ngaanyatjarra Media, Disability and the Arts Disadvantage and the Arts (DADAA) and West Australian Music Industry Association (WAMi).



Annual Funding

The Annual Funding program supports regional organisations and groups to coordinate diverse arts and cultural activities with confidence.

Annually funded organisations develop programs that are inclusive across a variety of age and cultural groups within the community, have partnerships with local government and community groups and demonstrate innovation. At their core, programs use arts and culture to help define a sense of identity for local communities.

A new structure was developed in 2010 as a result of demand for a better transitional process for organisations from Category B to Category A funding, and to encourage Category A organisations into triennial funding agreements with the Department of Culture and the Arts.

The new categories effective from 2011 were:

Peak Regional Arts Organisation Funding – up to \$40,000

Funding over a three-year contract period is available for larger arts organisations with a demonstrated track record of strong management and successful arts program delivery.

Key Regional Arts Organisation Funding – up to \$15,000

Funding over a three-year contract period is available for one key arts organisation with a demonstrated track record of strong management and successful arts program delivery that have been in receipt of \$8,000 per year for three or more consecutive years through the Annual Funding program.

Vital Regional Arts Organisation Funding – Up to \$10,000

Funding in this category is designed to support arts organisations that are incorporated associations and have established a program of arts activities. Organisations may specialise in one art form as long as they show innovation and diversity within that art form.

The scope of an organisation or group determines which category of Annual Funding it can access and the level of funding can increase as the organisation or group evolves and its programs develop and diversify.

The Annual Funding program is supported by the State of Western Australia through the Department of Culture and the Arts and Lotterywest.



Government of **Western Australia**
Department of **Culture and the Arts**





2011 Annual Funding supported:

Peak/Category A organisations 2010-2012

Arts and Culture Christmas Island Indian Ocean Territories	\$29,000
Arts and Cultural Development Council (Geraldton) Mid West	\$35,000
Avon Valley Arts (Northam) Wheatbelt	\$30,000
Denmark Arts Great Southern	\$40,000
Esperance Community Arts Goldfields-Esperance	\$40,000
Vancouver Arts Centre (Albany) Great Southern	\$40,000

Key/Category B organisations 2011-2012

Arts Margaret River South West	\$15,000
----------------------------------	----------

Vital/Category B organisations 2011

Boddington Community Resource Centre Peel	\$10,000
Community First International (Mandurah) Peel	\$10,000
Country Music Club of Boyup Brook South West	\$10,000
Exmouth Cultural Arts Centre Gascoyne	\$9,500
Ravensthorpe Regional Arts Council Goldfields-Esperance	\$9,750
Theatre Kimberley (Broome) Kimberley	\$10,000
Warmun Art Aboriginal Corporation Kimberley	\$10,000
Northampton Old School Mid West	\$10,000
Moora Fine Arts Society Wheatbelt	\$9,500

Boyup Brook Country Music Festival 'Umbrella making'. Photo provided by Country Music Club of Boyup Brook.

Regional Arts Fund



The Regional Arts Fund supports sustainable cultural development in communities across regional, remote and isolated Australia.

A key focus of this fund is to encourage the formation of productive partnerships to support home-grown arts activities as well as the creation of networks to reduce isolation, exchange ideas and publicise opportunities. Moreover it also assists the professional development of, and provides employment opportunities for, artists based in regional areas.

Delivery of the Regional Arts Fund in 2011 across Western Australia consisted of a number of Community Grant Programs and a Strategic Initiative Project undertaken by Country Arts WA.

The Community Grants Programs includes the following funds:

- * Arts Agencies
- * Strategic Regional Partnerships
- * Projects and Residencies
- * Mentorship Program (Emerging and Career)
- * Quick Response Grants

The Regional Arts Fund is an Australian Government initiative supporting the arts in regional, rural and very remote/isolated Australia. Country Arts WA manages the program in Western Australia.





Regional Arts Fund Panel

The Regional Arts Fund Panel is made up of members from across the state and provides a diverse coverage of Western Australian arts. Our Panel members have specialist expertise in one or more artforms and possess an informed opinion of community needs, response and interest.

In an effort to alleviate the workload of our current Panel members who all volunteer their time, this year Country Arts WA increased the pool of Panel members. This ensures that we achieve a broad, balanced and fair representation of artforms, genders and regions as well as arts management and community interests, including those of multicultural and Indigenous Western Australia.

The 2011 Regional Arts Fund Panel consisted of:

Simon Clarke (Chair)	Great Southern
Trish Barron	Pilbara
Charmaine Green	Mid West
Lorrae Coffin	Kimberley
Alex Mickle	South West
Sonya Dye	South West
Stewart Gartland	Great Southern
Taryne Laffar	Kimberley
Rachel McKenzie	Mid West
Virginia Jealous	Great Southern
Marina Couchman	Pilbara
Gwen Knox	Kimberley
Indra Geidans	Great Southern
Barbie Greenshields	Great Southern
Tahnee Roberts	Kimberley
Cathy Cummins	Kimberley

Projects and Residencies

The Projects and Residencies fund is designed to assist regional communities to create activities that develop cultural networks, possess capacity to have long term benefits and increase professional development opportunities.

This program encourages Indigenous and isolated communities to partner with professional artists, arts workers and cultural leaders to create high quality arts projects.

Projects and Residencies should be accessible and inspiring, as well as rewarding for both the artists and the community.

In 2011 Country Arts WA delivered two categories of Projects and Residencies: First Time Applicants and an Open category.

First time applicants – up to \$10,000 or \$15,000 above the 26th parallel

Available for applicants from regional and remote Western Australia that have not previously applied to Projects and Residencies or have been previously unsuccessful. This is to ensure smaller, more developmental projects can be fairly represented among grant recipients.

Open – up to \$20,000 or \$25,000 above the 26th parallel

Available to all applicants from regional and remote Western Australia, including first time applicants and previously unsuccessful applicants. Open category applicants will need to demonstrate that they are pushing the boundaries with arts outcomes, community engagement and sustainable cultural activity.

Both categories were well subscribed to, with a total of 20 applications received in the March round and 15 applications received in the August round.

March 2011 Projects and Residencies Funding supported: (for projects commencing after 1 July 2011)

Kununurra Agricultural Society Inc. **\$12,000**

The CirkAS Project | Kimberley

The Kununurra Agricultural Society will implement a yearly program of circus skills development workshops for local young and Indigenous people while also running 'Train the Trainer' workshops to further extend the projects impact.

Ravensthorpe Progress Association **\$10,000**

Ravensthorpe Identity Sculpture Project | Goldfields-Esperance

Professional artists will consult with the Shire and community to design and build the Ravensthorpe Identity Sculptures that will form the basis of town entry statements and street artworks.





Goldfields Repertory Club **\$10,000**

80th Anniversary Director in Residence | Goldfields-Esperance

Professional art director Ray Omodei will work with the Goldfields Repertory Club to produce a three-act play while also holding workshops and discussions for local students and community members. The project will commemorate the 80th anniversary of the Club.

Exmouth Cultural Arts Centre Inc **\$13,966**

Art Nouveaux | Gascoyne

Choreographer and dancer Bianca Martin will visit Exmouth to choreograph Art Wear Exmouth 2011, hold dance workshops for the whole community, provide professional development for the arts and dance workers in Exmouth, and continue to build on dance/performance projects from 2010.

Yadgalah Aboriginal Corporation **\$25,000**

Justice Crew dance workshops and performance | Gascoyne

Well known hip hop and break dancing dance crew, Justice Crew, will conduct workshops in Denham with Indigenous and non Indigenous young people who have been identified as 'at risk'. In addition to skills development, the workshops are intended to inspire participants and culminate in a community performance.

Broome Aboriginal Media Association **\$25,000**

Beagle Bay Chronicles | Kimberley

Broome Aboriginal Media Association Aboriginal Corporation (BAMA) will partner with Western Edge Youth Arts bringing together young people from Aboriginal backgrounds and young people from refugee and migrant backgrounds. They will gather Aboriginal Elders' oral histories and create a performance based on these stories.

City of Geraldton-Greenough **\$6,040**

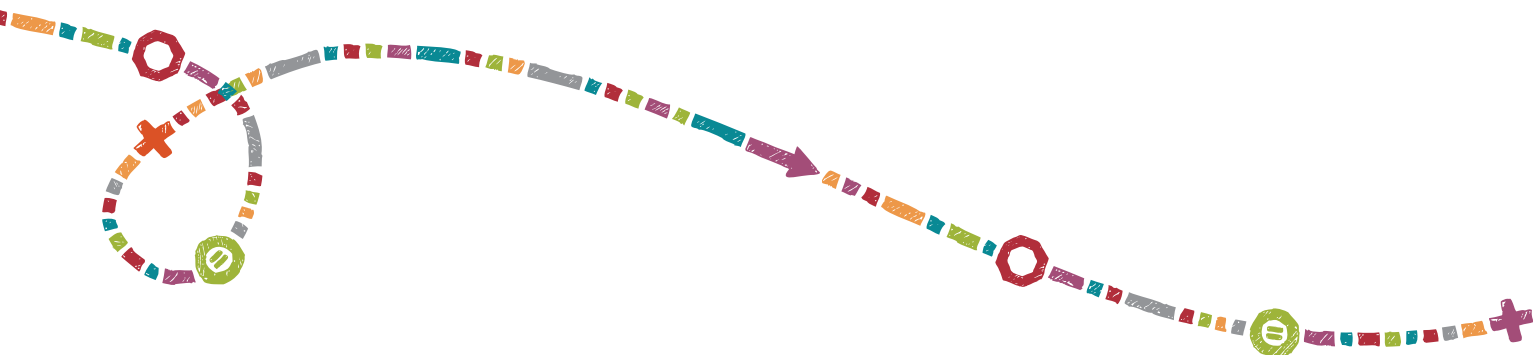
Big Sky Readers and Writers Festival | Mid West

Big Sky Readers and Writers Festival is a literature based festival which aims to stimulate and foster the joys of reading and writing in the Mid West community. A part of the 2011 Festival will see artists conduct workshops with school children in Geraldton and then the program will be extended, for the first time, to school children in Mullewa.

Arts and Culture Christmas Island Inc **\$16,920**

Hip Hop Dancing | Indian Ocean Territories

Members of Crucial Set, the self taught Christmas Island youth Hip Hop dance group, will receive professional training to enhance their knowledge, performance skills, self-esteem and sense of pride. Training will also be provided for beginners with assistance from Christmas Island's resident dance teacher.



Arts and Culture Christmas Island Inc
Thong Fish Art | Indian Ocean Territories

\$8,210

Thong Fish Art is a community art project to create individual artworks from thongs collected from Christmas Island beaches. Fish are the inspiration but artworks will only be limited by the artists' imagination. Workshops will be led by Emma Washer from the Big Barge Art Company on the Cocos (Keeling) Islands.

Kundat Djara Community Council
Community Music | Kimberley

\$12,180

Steve Berry from Outback Music will travel to Ringer Soak and work with the local band Sonic and the community Youth In Music workshops. Participants will be involved in guitar and drum lessons, song writing and performance skills which will culminate in a concert. Sonic will also be mentored to continue the work at the end of the project.

Arts Margaret River
Margaret River Readers and Writers Festival 2012 | South West

\$13,296

The Margaret River Readers and Writers Festival 2012 is an eight-day literature event for all ages. The Festival will include a three-day dedicated children's literature festival behind the label and also support the presentation of South West writers alongside Western Australian and interstate guests.

The Michael Leslie Foundation for the Performing Arts
The Nitestar Project | Pilbara

\$17,803

A three-week residency for two visiting performing artists from New York's NiteStar Program will work on a drama project and workshop with youth groups, community organisations and schools in the Pilbara.





Mentorship Program

The Mentorship program provides an opportunity for regionally based artists and arts workers to work side-by-side with a professional artist or arts worker mentor in any artform. The program is intended to develop professional relationships that benefit both parties. The mentoring partnership may be one-on-one or organisational mentoring.

In 2011 Country Arts WA delivered two categories of mentorships: Emerging – for individuals or groups aged 18 to 26 or in the first five years of their practice and Career - for individuals beyond the first 5 years of their practice.

2011 Mentorship Funding supported:

Emerging

Francis Batty

\$15,000

Drive-By Shooting | Kimberley

Francis Batty will undertake a mentorship with Paul Bell and Gwen Knox in digital photography. Throughout this mentorship Francis will explore the possibilities in juxtaposing still archival images with the arid Kimberley road landscape.

Career

Vivienne Robertson

\$25,000

Seeding Vast Art in Sacred Ground | Great Southern

Vivienne Robertson will undertake a mentorship with Sean Doran in relation to artistic direction of festivals and large-scale arts events in regional Western Australia.



2010 Mentorship Funding supported: (mentorships run in 2011)

Emerging

Rachel McKenzie

\$10,000

From little things... | Mid West

From little things... is a mutually beneficial skills development mentorship focusing on fine jewellery design, construction and showcasing. Pam Annesley and a specialist coach will play a vital role in assisting the Rachel to collate and focus her artistic path while developing concepts and promotional materials for the exhibition.

Sascha Bragaglia

\$15,000

Transitions | Pilbara

Sasha will be mentored by Cadi McCarthy to create a performance for musicians and eight dancers between 11 and 30 years old. It will investigate the challenges of living in a remote region and the impact on specific turning points in a person's lifetime, from youth to adulthood.

Career

Cindy Poole

\$25,000

Strength and Fragility | Goldfields-Esperance

Cindy will be mentored by Shar Feil Moorman, one of the most experienced glass artists in Australia. Through the mentorship Cindy will develop four areas of her practice; concepts and art theory, technical skills, networks and commercial development.





Quick Response Grant

Quick Response Grants allow regionally based groups or individuals to take up an extraordinary arts opportunity that has presented itself unexpectedly and needs to be responded to quickly. Often these opportunities emerge during an existing project or in preparation for an event.

2011 Quick Response Grant Funding supported:

Arts and Culture Goldfields Association Inc

\$1,500

Arts Industry Seminar | Goldfields-Esperance

An Arts Industry Seminar for local artists and arts groups presented in Kalgoorlie by Art Support Australia and Carol Whish-Wilson. This seminar also included individual consultancies on the topics of planning, fundraising and philanthropy.

Danny Calwyn and Band

\$1,500

Sneaky Weasel Gang Workshops and Performance | Pilbara

Danny Calwyn sought funding to travel under the mentorship of Peter Brandy, to perform at the Bunbury Horse and Country Music Show.

Frank MaCale

\$1,500

Peter Brandy Mentorship | Kimberley

Frank MaCale sought funding to travel under the mentorship of Peter Brandy, to perform at the Bunbury Horse and Country Music Show.

Nicola-Jane le Breton

\$800

Advanced Poetry Workshop Series 2011 | Great Southern

Nicola was selected as one of 'twelve apostles' for the 'Advanced Poetry Workshop Series 2011' at Peter Cowan Writers' Centre. Selected via a competitive process, Nicola-Jane sought financial support to cover the fee and her travel expenses from Denmark to attend ten monthly three-hour workshops at the Centre in Joondalup.

Marina Baker installing works during residency. Photo provided by Marina Baker.

Denmark Arts Council (Inc.) **\$1,000**

Bodies in Denmark Space | Great Southern

Visiting choreographer, Willi Dorner to conduct lecture, engage with dance community, watch contemporary dance rehearsal and create route definition for unique and contemporary site specific, public art dance project in Denmark planned for 2012.

Catherine Howard **\$1,488**

Presentation of the Dr Ross Ingram Memorial | Goldfields-Esperance

Artists Alison Dimmer and Catherine Howard will travel to Brisbane for the presentation of the Dr Ross Ingram Memorial Competition for 2011. The Award Ceremony to be held as part of the proceedings of the 2011 Australian Medical Association (AMA) National Conference in May 2011.

Karissa Morrisby **\$1,150**

Propel Youth Arts - ArtsCAMP 2011 | Gascoyne

ArtsCAMP is a week-long residential camp for young people aged 15-17. Throughout the week campers participate in a number of arts workshops, attend theatre productions, meet professional artists and experience the WA arts scene from a new perspective.

Polly Valentine **\$1,500**

Outskirts Tutor Ausdance Accreditation | South West

To assist Outskirts Dance Creative Director and Tutor, Polly Valentine, to bring her art practice in line with nationally accredited Ausdance standards of professional practice for dance teachers. This will enable Polly to extend her art practice, both geographically and creatively, as well as in terms of access to education and health sectors.

Nicole Mickle **\$1,494**

We Are Here - International Symposium | South West

Travel and accommodation support for Nicole Mickle to attend We Are Here International Symposium for Artist Run Initiatives. This was held in Sydney during September 2011.

City of Bunbury **\$1,500**

Justice Crew Dance Workshops | South West

Justice Crew contemporary dance troupe visited Bunbury for their inaugural children's festival. Subject to demand demonstrated by requests from older youth, the Justice Crew hosted two one-hour workshops. These focused on building skills for 13 to 15 year olds and 16 to 20 year olds.





Catherine Higham

\$1,500

Cross Flow | Wheatbelt

To create a short documentary film using digital stills to be presented at two international events in October 2011. One is an exhibition in Ireland, the other a virtual symposium. Steve Brown from the Film and Television Institute assisted Higham with this project with Vegas Movie Studio software.

Rotary Club of Broome

\$1,500

Storm the Stage 2011 WA Final | Kimberley

Sought sponsorship to fly two Indigenous young people (Year 12 students) to Perth to perform in the Western Australian final of Storm the Stage 2011. This event was held at the Rixon Theatre, Penrhos College, Como in October 2011.

The Cannery Arts Centre Inc.

\$1,000

Cannery Summer School 2012 | Goldfields-Esperance

Artist in Residence, Carmen McFaul will run art workshops as part of the Cannery's Summer School in 2012. The workshops will cater for participants of all age groups and of varying skill levels. Carmen will coordinate these workshops in conjunction with an exhibition for the Summer School program.

Bradley Gilchrist

\$1,493

Lisa Gasteen Opera Summer School | Goldfields-Esperance

The Lisa Gasteen Summer School is an opportunity to train as an opera repetiteur in an intensive three-week program in November. The course offers professional development opportunities in tuition, workshops and performance. I am seeking assistance for flights, transport and accommodation during the course.

South West Opera Company

\$1,500

Australian Choral Conductors Educational and Training Summer School | South West

Attendance for Marguerite Monagle, the Musical Director for the South West Opera Company, at the Australian Choral Conductors Educational and Training (ACCET) summer school in Melbourne during January 2012. The summer school workshops provided professional development in choral and conducting work. Marguerite will extend her choral and conducting experience with youth, children and adults.





Strategic Regional Partnerships

Strategic Regional Partnership funding is designed to assist regional communities to develop programs/positions that have a long-term impact and strategic intent. Organisations funded through the current Regional Arts Fund agreement receive \$50,000 per year for three years as part of Country Arts WA's commitment to funding organisations to succeed.

The following projects commenced in 2010 and entered their second year in 2011:

Shire of Halls Creek

\$150,000 (over 3 years)

Halls Creek Arts Development Project

The Halls Creek Arts Development Project is building the capacity and confidence of Aboriginal artists in Halls Creek and re-establishing the artist-owned and governed Yarliyl Art Centre. In partnership with a range of local organisations and with the support of key state/national agencies, parallel programs of artist development and enterprise development are being implemented.

Some of the highlights of 2011 were the employment of a temporary arts centre Manager and casual arts worker to support the Arts Development Officer, an exhibition at Merenda Gallery in Fremantle and two artists being selected to participate in the *Revealed* exhibition in Perth.

Ngaanyatjarra Media Aboriginal Corporation

\$150,000 (over 3 years)

Ngaanyatjarra Music Development Program

The Ngaanyatjarra Music Development Program was established to support music development in up to 14 communities in the Ngaanyatjarra region. This project aims to establish a three year music development program for Ngaanyatjarra communities and to establish a vibrant music industry in the region. The program will include music skills development, performance and festivals, recording, touring and business development.

Some of the highlights of 2011 were the Ngaanyatjarrakua Turlku Purtingkatja Festival which was attended by over 400 people and saw eight local bands perform; and 20 Yarnangu people attending the remote Indigenous Media Festival in Umuwa, South Australia.





Arts Agencies

The Arts Agencies fund is designed to assist Western Australia's arts and cultural agencies to deliver programs in partnership with regional communities as well as extend networks and strengthen relationships and development of the arts across the regions. Organisations funded through the current Regional Arts Fund agreement will receive \$50,000 per year for three years as part of Country Arts WA's commitment to funding organisations to succeed.

The following projects commenced in 2010 and entered their second year in 2011:

Disability in the Arts, Disadvantage in the Arts, Australia

\$150,000 (over 3 years)

DADAA Regional Arts and Health Program

Disability in the Arts, Disadvantage in the Arts, Australia (DADAA) will maintain its reputation and status as a key producer of high quality artistic works and cultural development outcomes with long-term meaningful change to individuals and communities. DADAA will achieve this by employing a part-time (three days per week) Regional Arts and Health Project Officer in each of the focus regions (two Project Officers will be employed at any one time). DADAA continued to broaden and strengthen the arts-based Community Cultural Development programs that it has been delivering in the South West, the West Kimberley and will commence in Goldfields-Esperance in 2012.

Some of the highlights in 2011 were the commencement of a new six year focus in Esperance, the 4th Marsh Art Festival in Derby and celebrating the success of the South West project as it concludes.

Western Australian Music Industry Association

\$150,000 (over 3 years)

WAM Regional Program

Western Australian Music Industry Association's (WAM) Regional Officer is a full time position dedicated to the coordination of WAM's activities in regional Western Australia, the delivery of targeted projects and building regional contemporary music networks. WAM's Regional program incorporates regular fieldtrips to the regions, the annual WAM Regional Round Table as part of the WAMi Festival, the development of a touring and 'Sounds of' recording projects.

Some of the highlights of 2011 were the Sounds of Wiluna project, the 2011 WAMi tour through the Wheatbelt and the attendance of more than 30 regional music professionals at the Regional Roundtable.





Drug Aware YCulture Regional is a youth arts funding and development program. The fund helps young people aged 12 to 26 living in regional Western Australian communities to actively create, plan, manage and deliver their own arts projects through support from the Regional Youth Arts Development Officer.

Drug Aware YCulture Regional is open to youth arts and culture projects across all art forms such as but not limited to music, theatre, performance, new media, filmmaking, visual arts, urban art, writing and dance.

This fund continued to be in great demand in 2011, with 14 applications supported totalling \$45,700. Funding was allocated to projects in seven of the nine regions in regional Western Australia.

Drug Aware YCulture Regional is delivered through a partnership between Healthway, Country Arts WA, and the Drug and Alcohol Office with the Drug Aware campaign.





Drug Aware YCulture Regional Panel

Drug Aware YCulture Regional offers the opportunity for young people living in regional Western Australia to become panel members. The Regional Youth Arts Development Officer and other panel members mentor new trainees with their assessment and feedback of Drug Aware YCulture Regional applications and acquittals. In 2011 the YCulture Regional panel had representation from the Pilbara, Great Southern, South West and Goldfields-Esperance regions.

Volunteering as a Drug Aware YCulture panel member offers young people a greater understanding of assessment panels and funding processes. Moreover it further develops communication skills and an awareness of artists working in regional Western Australia and the communities actively involved in youth arts. This is often a springboard into a potential career path in the arts.

The 2011 Drug Aware YCulture Regional Panel consisted of the following young people:

Brittany Moxham, *Pilbara*

Kaitlyn Seymour, *Great Southern*

Abbey Sergeant, *Great Southern*

Terrence Winner, *Goldfields-Esperance*

Caitlyn Edwards, *Goldfields-Esperance*

Curtis Taylor, *Pilbara*

Hannah Chambers, *South West*

Alice Fletcher, *South West*



2011 Drug Aware YCulture Funding supported:

***Youth Theatre Sports I Peel* \$3,000**

Glenn Hall and his ensemble from Spontaneous Insanity visited the youth theatre group, Riptide, and supported their efforts by holding two workshops and performing two shows in May 2011.

***Breakaway Youth Centre I South West* \$3,000**

To obtain a sense of ownership of their centre, the young people created an urban art design on the front of the building including the new name 'Breakaway Youth Centre'. The project included two art skills workshops with Noel Barns where they learnt new art applications and artistic skills including the use of protective anti-graffiti paint.

***Wonderland Creatures I South West* \$2,960**

Workshops for young people were held to teach new skills while creating artworks for a community festival. Workshops involved using Paverpole, a new European technique, to build weather proof and durable sculptures that incorporates the use of recycled materials.

***Mural for the Old Pizza Pala I Peel* \$3,000**

A mural art project was held over the July school holidays that involved the youth from the Boddington community. Artists Drew Straker and David Garland were engaged to assist with the mural design.

***School Holiday Dance Program I Peel* \$3,000**

A dance project for people between the ages of 12-21 years was run during the October school holidays. Covering a number of weeks this project culminated in a dance performance that the youth helped to choreograph. The participants will get the chance to learn new skills and to participate in something that they love doing.

***Hip Hop Health I Goldfields-Esperance* \$3,000**

Dance instructor Jayne Lee was engaged to hold hip hop dance workshops during the October school holidays. In this project youth were given the opportunity to learn many new skills, including hip hop, movement, fitness, cooperation with others as well as the discipline in following instructions.

***Create2Cope Art Workshop I Kimberley* \$5,000**

Artists Frances Rowett and Nathan Hoyle were brought to Fitzroy Crossing for a weekend of workshops that will engage all the local young people from the ages of 12-17. The artists ran the Create2Cope workshops over one day on the Saturday with the Sunday showcasing some of the skills learned and the artwork created. This was a community celebration and barbeque.

***Boddington Community Float I Peel* \$3,000**

In the October school holidays a float created for the Boddington Rodeo street parade culminated ideas of the communities youth. A three-day workshop was held by well-known artist Len Zuks. The young people involved in creating the float walked alongside it during the parade.





Impressions I South West

\$3,000

Artist, Helen Hulme will run printmaking workshops from November 2011 to January 2012. The workshops enabled South West youth to experiment with different mediums including wood block fruit and vegetable lino. Participants took home cards, books and printed shirts demonstrating their new skills.

No Shame Music I Gascoyne

\$5,000

The Bartlett Brothers visited the Burringurrah community to run music workshops with the young people. The workshops were held over a week and concluded with the young people presenting a final performance to the whole community.

The Factory Revisited I South West

\$2,750

Mike Goodwin ran music workshops for the local youth in December. A recording demo was made of the participating bands and they then performed a concert at 'The Factory' in the Margaret River Cultural Centre. This performance was inspired by Andy Warhol's 'Exploding Plastic Inevitable'.

YAP (Youth Art Project) I Great Southern

\$3,000

Experienced surfboard shaper and graphic artist, Warren Thompson and textile expert, Phoebe McCarthy ran a clinic with local young people to create pieces of artwork from old/new/broken surfboards. The clinic ran over three sessions with a final exhibition of the pieces created held at the Denmark Visitors Centre.

RIPTIDE Dance Project I Peel

\$3,000

Young people collaborated for more dancers within the community to work with internationally recognised choreographer Helen Duncan. Over three days, within two local venues the youth explored dance as an education and entertainment tool to present relevant health issues. Fifteen young people followed onto the second stage of their artistic development.

Culture Connect I Wheatbelt

\$2,990

Maar Koodjal, cultural dance and performance group, ran cultural workshops with young people from the Moora Youth Centre during January in 2012. Following the workshops the local youth, along with the Maar Koodjal dancers, held a final performance at the Moora Youth Centre Australia Day Celebrations.

Key Performance Indicators and Audited Accounts



Key Performance Indicators

GOAL	KPI	PLANNED	ACTUAL
1. To have positioned and branded Country Arts WA as a leading cultural contributor within the creative industries	New partnerships are established that extend the delivery of culture and arts programs in regional WA.	2	5 Skywest The West Australian Rio Tinto Horizon Power Crossland Resources
	Number of boards, committees Country Arts WA represented on – state, regional and national	State x 4 Regional x 6 National x 2	State x 8 – FutureMoves, WA Chamber of Culture & Arts Executives Committee, CircuitWest, State Regional Round Table Propel Board Young People and the Arts Round Table DCA Arts Development Panel , Small to Medium Touring Reference Group Regional x 3 – Gascoyne Arts Advisory Group, Gascoyne in May, Sand Tracks Advisory Group National x 5 – Regional Arts Australia, Blue Heelers, National Executive 2012 Conference, Regional Arts
	Number of presentations at key industry events	4	Achieved – OPEN YOUR EYES , National Rural Health and Arts Conference, Australian World Music Expo, Revealed
	Advocacy and Lobby Campaign implemented	By Jan 2010	Achieved – Lobbying and Advocacy Plan implemented in February 2010



GOAL	KPI	PLANNED	ACTUAL
1. To have positioned and branded Country Arts WA as a leading cultural contributor within the creative industries (cont.)	Marketing and Communications Plan implemented	By Jan 2010	Achieved
2. To have engaged the nine regions in an accessible, diverse and innovative range of artistic and funding programs	Fully subscribed funding programs	Fully subscribed	Achieved for all but Mentorship program
	Applicants to funding programs represent all nine regions	9	Achieved
	Number of Special Projects e.g.: Remote Indigenous Touring Initiative, BHP Legacy Project, Focus Region initiative	3	Achieved x 4 BHP Campfire Festival, Aboriginal Art Centre Hub of WA, Gascoyne Focus Region, Sand Tracks, WA Long Paddock, OPEN YOUR EYES
	Establishment of full time RADO in Focus Region	1	Achieved
	Number of RAF funded full time Regional Arts Development Officers	4	Not achieved
	Establishment of a network of regionally based cultural and arts development officers.	Partnership with Development Commissions, DCA and WALGA established	Not achieved
	National and State Tours delivered to nine regions	9	Achieved
	Annual Regional Forums delivered in partnership with DCA	1	Achieved – OPEN YOUR EYES Youth Forum





GOAL	KPI	PLANNED	ACTUAL
3. To be an effective organisation – creative, motivated, well-resourced	Staff Retention	Max 2 staff loss p/yr	Not achieved
	Board retention	see out full terms (6 yrs)	Not achieved
	Number of professional development taken by staff as a team	2 per year	Achieved – Digital Storytelling, Goldfields Field Trip
	Number of PD taken individually	1 per year each	Not achieved – 75% success
	Staff Salaries – annual review and targets	2.9%	Achieved – 2009 Salary Review recommendations implemented in 2011 – average increase of salary banding for all positions of 14%
	No of inspirational motivational sessions	4	Not achieved – 1 only
	IT plan established and implemented	1	Plan established, implementation in 2012
4. To have a growing, diverse and proactive member base	See Marketing Plan		



Marketing KPIs

GOAL	KPI	PLANNED	ACTUAL
1. Increasing membership numbers, diversity of membership and engagement with Membership.	A 5% annual increase to fortnightly e-news (Art-e-facts)	630	Not achieved – current distribution is 537, which is a slight increase on list establishment however the quality of the distribution list has improved dramatically.
	Number of hits on website	Develop by June (as part of new website)	See below for new website
	New website and e-advocacy campaign launched	June	New website Launch planned for first half of 2012
	Virtual Resource Office created	June	Not achieved
	Increase in membership	222 20% increase	Not achieved – 180 members (increase of >20% over 2010)
	Membership Satisfaction	80%	Not achieved – 73.5% in 2011 Members Survey
	Number of members voting at AGM	15% increase	Achieved – 47 (2011 target 44)





GOAL	KPI	PLANNED	ACTUAL
2. Building and raising the profile of the Country Arts brand as an industry leader	Research results formally published in professional journals and special publications	Maintain	Not achieved
	Produce quarterly newsletters	4	2 only Art Torques produced – publication under review
	Number of presentations at key industry events	4	Achieved
	Increased media profile	10% increase	Achieved – 161 press clippings in 2010, 408 press clippings in 2011
	Number of Regional Champions	7	Not achieved
	Number of field trips and events in all nine regions A minimum number of events held per year Events= workshop (e.g.: Measure Up, networking meetings, Shows on the Go, training, master classes, CAT A's, fields)	20	Achieved
	A minimum number of people per year participating at these events Participating=workshop/training/meeting participants, volunteer presenters/workers	250	Achieved
	Media partnership	3	Achieved – ABC Radio, WIN TV, The West Australian
	Presentations and representations to Local Government CEO's and Presidents, business and community leaders per year	15	Achieved





GOAL	KPI	PLANNED	ACTUAL
3. Diversifying the source of income	Donation program	Implemented	No formal donations program implemented
	Sponsorship Packages and an annual high quality publication of success stories from regional WA	2	1 only - The West Australian liftout
	Annual partnership event	1	Achieved
4. To build audiences, participants and clients in Country Arts WA priority areas.	Number audience in priority areas Indigenous, Young People, Focus Region	2011 figures as baseline	Youth 14% Indigenous 18% Gascoyne 1%
	Number of participants in priority areas Indigenous, Young People	2011 figures as baseline	2011 figures as baseline Total Workshops 248 Total Participants 3,318 Youth 86% Indigenous 52%
	Number of clients in priority areas Indigenous, Young People, Health and Well being, Technology, Focus Region	2011 figures as baseline	Indigenous 15 Technology 5 Youth 38 Health 21 Gascoyne 7



Financial KPIs

GOAL	KPI	PLANNED	ACTUAL
Maintain reserves above 10% of operating costs	Growth in annual operations surplus	\$8,000	Deficit of \$6,129
	Growth in partnerships providing in-kind support	8	Achieved 8
	5% annual growth in membership fees	\$7,350	Achieved \$12,000
Diversify income streams (operations)	60% operations income from government sources	66%	Not achieved 75%
	10% operations income from cash sponsorship	6%	Not achieved 5%
	30% operations income from other sources	28%	Not achieved 20%
Diversify income streams (projects)	Growth in donations	\$10,000	Achieved
	Growth in philanthropy	\$15,000	Not achieved
	Growth in government funding for discrete projects.		
	Federal	\$80,000	\$381,852
	State	\$270,000	\$174,933
	Local	\$30,000	\$35,281
	TOTAL	\$380,000	\$592,066
	Growth in cash sponsors	2	Achieved



Board of Members Report

Your Board Members submit the financial report of Country Arts (WA) Incorporated for the financial year ended 31 December 2011.

BOARD MEMBERS

The names of Board members throughout the year and at the date of this report are:

Suzie Haslehurst - Chairperson
(Appointed April 2011)

John McCourt - (Resigned
March 2011)

Simon Clarke - Vice Chairperson

Katherine McLean - Secretary

Sari Jacobsen - Treasurer

Fay O'Brien

Annette Stokes (Appointed
November 2011)

Pippa Davis (Appointed April 2011)

Bruce Devenish (Resigned April 2011)

Pina Caffarelli (Resigned April 2011)

Christine Elaine

Ross Beckett (Appointed April 2011)

Peter Rupp (Appointed June 2011)

Kira Fong (Appointed April 2011)

Kate Fielding

Doone McAlary

Tony Shaw

PRINCIPAL ACTIVITIES

The principal activity of the association during the year was to support the development and delivery of the arts and cultural activity in regional Western Australia.

SIGNIFICANT CHANGES

No significant change in the nature of these activities during the year.

OPERATING RESULTS

No significant change in the nature of these activities during the year.



Audited Accounts

INCOME AND EXPENDITURE STATEMENT FOR THE ENDED 31 DECEMBER 2011

	2011 \$	2010 \$
INCOME		
NON GRANT INCOME		
Earned Income	-	-
Audience Sales	-	-
Box Office and Entry Fees	88,164	-
Contract Fees (Presenters Fees)	694,087	232,248
Total Audience Sales	782,251	232,248
Fees and services		
Participants Fees (Program Fees)	6,800	-
Marketing Materials	10,637	-
National Rural Health Alliance	30,650	-
Membership Fees	14,800	14,109
Project Management Fees	148,281	56,129
Project Partners	25,000	25,000
Tour Coordination Fees	14,250	-
Total Fees and Services	250,418	95,238
Resources Income		
Other Usage Income	3,500	2,898
Total Resources Income	3,500	2,898
TOTAL EARNED INCOME	1,036,169	330,384



	2011 \$	2010 \$
Sponsorship and Philanthropic		
Sponsorship		
Healthway – Funds b/f	3,737	3,000
Healthway	162,880	132,000
BHP Newman	200,000	104,685
BHP Newman- Funds b/f	-	92,712
Rio Tinto - Pilbara Iron	50,000	-
Crossland Resources	25,000	-
Horizon Power	20,000	-
Worley Parsons	5,000	-
Other Sponsorships	2,200	-
In Kind Sponsorship	50,076	-
Total Sponsorship and Philanthropic	518,893	332,397
Donations		
The Ian Potter Foundation	20,000	-
Other	20	10
Total Donations	20,020	10
Other Earned Income		
Interest (Received)	57,671	60,968
Reimbursements (Support Fees)	777	30,146
Total Other Earned Income	58,448	91,113
TOTAL NON-GRANT INCOME	1,633,529	753,904



INCOME AND EXPENDITURE STATEMENT FOR THE ENDED 31 DECEMBER 2011

	2011 \$	2010 \$
GRANT INCOME		
Australia Council Funds		
Australia Council- Funds b/f	98,351	-
Music Board – Sand Tracks	20,650	-
Comm.Partners – Out There	48,345	-
Comm.Partners – Gascoyne Partnership	38,489	-
Australia Council	-	155,000
Total Australia Council Funds	205,795	155,000
Other Commonwealth		
Regional Arts Fund 4 b/f	-	7,523
RAF 5 2009 – 2013 Funds b/f	51,820	52,1120
Regional Arts Fund 5 2009-2013	588,842	474,933
Playing Australia Funds	342,153	50,441
OFTA – WAAACH – Funds b/f	7,133	131,071
OFTA – SIP b/f	40,000	44,000
OFTA – ICC – AACHWA	378,540	206,460
IOT Funding	131,435	130,692
OFTA – Sandtracks	84,825	45,450
Total Other Commonwealth	1,624,749	1,142,689
DCA WA		
DCA – 2009 Brought Forward	184,162	261,590
DCA – 2011 Allocation	1,031,397	1,229,028
DCA – Ignite Project Funds	481,043	272,000
DCA – Other Projects	20,000	30,000
Total DCA WA	1,716,602	1,792,618



	2011 \$	2010 \$
Other State Funding		
Lotterywest	192,411	77,301
Mid West Dev. Com	45,000	-
Gascoyne Dev. Comm	123,123	108,300
Wheatbelt Dev. Commission	-	10,000
Total other State Funding	360,534	195,601
Local Government		
Local Government - Funds b/f	2,000	10,974
Local Government Funds	55,281	20,000
Total Local Government	57,281	30,974
TOTAL GRANT INCOME	3,964,960	3,316,883
TOTAL INCOME	5,598,489	4,070,787



INCOME AND EXPENDITURE STATEMENT FOR THE ENDED 31 DECEMBER 2011

	2011 \$	2010 \$
EXPENDITURE		
SALARIES, WAGES & FEES		
Tour Coordination	-	90,552
Creative Personnel/Consultants	251,268	334,824
Performers/Artists/Artswriters	53,633	-
Production/Technical	67,830	26,319
Management / Administration		
Management Salaries	957,768	669,852
Casual Staff	3,812	3,075
Total Management / Administration	961,580	672,927
Marketing/Promotion/Development	67,000	52,539
Fees, Allowance and On-Costs		
Holiday Pay & LSL	-	12,880
Workers Compensation	7,834	7,156
Superannuation	109,768	75,875
Staffing On costs 2010	5,533	-
Staffing On costs 2011	53,592	-
Professional Development	11,601	11,408
Vehicle & Emp. Benefits	28,203	16,703
Per Diems	30,215	22,442
Fringe Benefits Tax	1,612	1,970
Total Fees, Allowances and On-costs	248,359	148,433
TOTAL SALARIES, WAGES & FEES	1,649,671	1,325,593

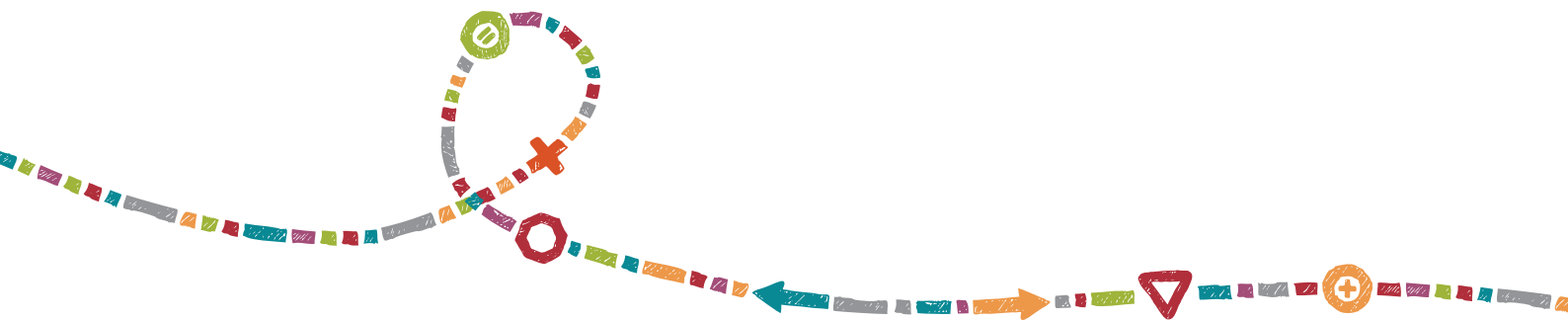


	2011 \$	2010 \$
PROGRAM, PRODUCTION & TOURING		
Venue and Exhibition Space	42,322	-
Equipment, Lighting & Audio Cost	21,521	3,545
Scenic, Staging and Materials	6,313	-
Other Development and Creative	17,381	-
Travel, Freight, Bump In/Out Cost		
Accommodation	347,004	211,238
Regional Travel – Fares	151,395	125,766
Couriers & Freight Costs	124,595	18,950
Trip Incidentals & Meeting Expenses	3,934	-
Vehicle Hire Inc Insurance	106,733	64,969
Travel Costs	57,787	46,576
Project Officer Travel	1,489	4,899
Regional Travel – RADM	11,577	11,819
CEO Travel	529	-
RAA Travel	3,940	5,840
Total Travel, Freight, Bump In/Out Cost	808,983	490,058
Other Production & Touring Cost		
Producers Fees/Remount Costs	816,362	322,855
Production Consumables	-	689
Tour Coordination Fees	-	1,500
Touring Allowances	108,077	58,202
Total Other Production & Touring Cost	924,439	383,246
TOTAL PROGRAM, PRODUCTION & TOURING	1,819,851	876,848



INCOME AND EXPENDITURE STATEMENT FOR THE ENDED 31 DECEMBER 2011

	2011 \$	2010 \$
ITEMS-NON-PRODUCERS/PRESENTERS		
CAWA Project Management Fee	71,858	28,288
Bad Debts Written Off	-	10,000
Conference & Workshops	45,382	3,274
Mentorship/Development Programs	-	13,053
Industry & Community Advocacy	1,997	305
Community Projects	1,092,760	1,002,163
Evaluation and Research Costs	79,593	227
TOTAL ITEMS-NON-PRODUCERS/PRESENTERS	1,291,589	1,057,311
MARKETING & PROMOTION		
Advertising (all media)	39,311	25,572
Promotional Materials	78,284	20,123
Website, Publications & Documents	54,720	79,350
Marketing & PR	56,533	10,658
Fundraising & Sponsorship Expenses	734	5,904
Rebranding	5,130	2,139
TOTAL MARKETING & PROMOTION	234,711	143,746



	2011 \$	2010 \$
INFRASTRUCTURE COSTS (ADMIN)		
Office Rent and Running Costs	11,855	13,689
In Kind Expenses	50,076	-
Office Consumables & Resources		
Staff Amenities	6,358	5,824
Printing and Photocopying	19,281	14,750
Computer Operations	14,707	14,660
Subs & Memberships	7,977	14,828
Stationery	12,130	10,741
Office Equipment	3,738	1,703
Archive & Storage	1,691	1,407
TOTAL OFFICE CONSUMABLES & RESOURCES	65,822	63,914
COMMUNICATIONS		
Couriers	1,104	185
Postage	9,470	6,749
Telecommunication	30,276	28,277
Internet	3,027	3,168
TOTAL COMMUNICATIONS	43,877	38,380
TRAVEL		
Travel – Fares & Fuel	7,135	3,286
M.V Parking	1,302	575
TOTAL TRAVEL	8,437	3,862



INCOME AND EXPENDITURE STATEMENT FOR THE ENDED 31 DECEMBER 2011

	2011 \$	2010 \$
LEGAL, FINANCE & GOVERNANCE		
Audit & FBT Fees	12,870	10,700
Bank Charges	2,011	930
Insurance	13,100	9,077
Recruitment costs	9,559	6,395
Training	-	1,811
Meeting Expenses	9,523	15,646
Board & Regional Panel	83,603	35,000
Gifts and Donation	-	36
TOTAL LEGAL, FINANCE & GOVERNANCE	130,665	79,595
Depreciation & Loss on Sale	7,594	5,722
Contingency	512	-
Acquittal - Playing Australia	11,908	-
Unexpected Grants & Sponsorship	317,884	414,018
TOTAL INFRASTRUCTURE COSTS (ADMIN)	648,690	619,180
TOTAL EXPENSES	5,645,617	4,022,679
NET ORDINARY INCOME	(47,129)	48,108
Other Income/Expense		
Other Income	-	-
Future Project Funds b/fwd	41,000	-
Total Other Income	41,000	-
NET INCOME / (LOSS)	(6,129)	48,108

BALANCE SHEET AS AT 31 DECEMBER 2011

	2011 \$	2010 \$
ASSETS		
Current Assets		
ANZ General Cheque Account	170,435	22,170
Online Saver Account	382,138	623,806
Donation Fund Account	5,380	5,362
Funds Held Account	20	20
Newman Project Cash Management	32	10
Newman Project Online Saver	90	90
RAF V Cheque A/C	5,711	19,539
RAF V Online Saver	414	452,878
WAAACH Business Classic Saver	113,986	47,243
WAAACH Online Saver	93,101	70,261
Petty Cash Float	300	500
Total Cheque/Savings	771,607	1,241,879
Accounts Receivable	144,572	151,403
Other Current Assets		
Inventory and Work in Progress		
RAF Grants Prepayments	25,000	128,025
Prepayments	13,915	4,108
Sundry Debtors	3,436	-
Suspense Account	-	1,633
Total Inventory and Work in Progress	42,351	133,766


BALANCE SHEET AS AT 31 DECEMBER 2011

	2011 \$	2010 \$
Bond - Cab charge	200	200
Total Other Current Assets	42,551	133,966
Total Current Assets	958,730	1,527,248
Fixed Assets		
Office Furniture & Equipment	34,608	45,709
Less Accumulated Depreciation Furniture / Equipment	(14,413)	(32,989)
Total Office Furniture & Equipment	20,195	12,720
TOTAL FIXED ASSETS	20,195	12,720
TOTAL ASSETS	978,925	1,539,968

	2011 \$	2010 \$
Accounts Payable	125,681	35,232
Credit Cards		
ANZ Visa Card	-	7,734
ANZ Debit Card	(56)	(354)
Total Credit Cards	(56)	7,380
Other Current Liabilities		
Sundry Creditors	14,908	1,000
Grants Received in Advance		
Australia Council – Gascoyne	117,981	103,125
Lotterywest – CW Audience Development	59,990	-
OFTA – Sandtracks	-	7,134
DCA – Circuitwest – Measure Up	19,918	16,918
RAF V 2009 - 2013	17,495	606,337
OFTA - SIP	74,000	72,000
National Disability Services	5,000	-
Playing Australia - Touring	-	58,654
NRHA Conference	-	6,000
Total Grants Received in Advance	291,384	870,168

BALANCE SHEET AS AT 31 DECEMBER 2011

	2011 \$	2010 \$
Unexpended Grants / Sponsorship		
DCA – Devolved RAD	22,773	36,419
DCA – Sandtracks	51,018	9,735
DCA – Devolved Touring 2010	-	52,070
DCA – Contemp Music Touring	1,887	14,137
DCA – Schools Touring	39,684	19,800
DCA – Circuitwest Tour	-	52,000
Gascoyne Dev. Com – Out There	-	45,123
Gascoyne Dev. Comm – Measure Up	2,570	18,000
OFTA – AACHWA 2011/12	113,751	-
RAFV 2009 - 2013	35,930	51,820
Healthways – Y Culture Regional	2,134	3,737
Out There	46,137	-
Local Gov App. By Interview	2,000	2,000
Total Unexpected Grants / Sponsorship	317,884	304,842
Tax and Other Withholdings		
Staff Social Club Funds	661	225
Provision for Group Tax	18,179	13,440
Provision for Superannuation	8,599	198
Tax Payable	5,555	37,397
Total Tax and Other Withholdings	32,994	51,260



	2011 \$	2010 \$
Provisions		
Provision for Annual Leave	27,562	40,069
Provision for Long Service Leave	-	14,321
Parental Leave Reserve	7,000	7,000
Total Provisions	34,562	61,390
Total Other Current Liabilities	691,732	1,288,660
Total Current Liabilities	817,358	1,331,272
TOTAL LIABILITIES	817,358	1,331,272
NET ASSETS	161,567	208,696
EQUITY		
Future Projects Funds	-	41,000
Retained Earnings	167,696	160,588
Transfer Future Projects Funds	-	(41,000)
Net Income	(6,129)	48,108
TOTAL EQUITY	161,567	208,696

STATEMENT OF CASH FLOWS FOR THE YEAR ENDED 31 DECEMBER 2011

	NOTE	2011 \$	2010 \$
CASH FLOWS FROM OPERATING ACTIVITIES			
Receipts from members		14,800	14,108
Grant receipts & other funding		5,833,208	3,678,138
Support fees		777	30,146
Interest received		57,671	60,968
Payments to suppliers and employees		(6,361,658)	(4,062,884)
Net cash provided by / (used) from operating activities	4(ii)	(455,202)	(279,524)
CASH FLOWS FROM INVESTING ACTIVITIES			
Fixed assets purchases		(15,070)	(5,113)
Net cash provided/(used) from investing activities		(15,070)	(5,113)
Net increase/(decrease) in cash held		(470,272)	(284,637)
Cash at beginning of year		1,241,879	1,526,516
CASH AT THE END OF THE YEAR	4(i)	771,607	1,241,879



NOTES TO THE FINANCIAL STATEMENTS FOR THE YEAR ENDED 31 DECEMBER 2011



1. STATEMENT OF SIGNIFICANT ACCOUNTING POLICIES

The financial report is a special purpose financial report that has been specifically prepared for distribution to members and funding bodies in accordance with the constitution.

The financial statements have been prepared on an accruals basis and is based on historical costs and does not take into account changing money values or, except where stated, current valuations of non-current assets. Cost is based on the fair values of the consideration given in exchange for assets.

The following is a summary of the material accounting policies adopted by the Association in the preparation of the financial report. The accounting policies have been consistently applied, unless otherwise stated.

(a) REVENUE

Interest revenue is recognized upon receipt.

Grant income is recognized when the association gains control of the contribution.

Revenue from services is recognized upon delivery of the service to customers.

All revenue is stated net of the amount of goods and services tax (GST).

(b) EMPLOYEE BENEFITS

Provision is made for the association's liability for employee benefits arising from services rendered by employees to balance date.

Employee benefits expected to be settled within one year together with benefits arising from wages and salaries and annual leave and sick leave, which will be settled after one year, have been measured at their nominal amount. Other employee benefits payable later than one year have been measured at the present value of the estimated future cash outflows to be made for those benefits.





NOTES TO THE FINANCIAL STATEMENTS FOR THE YEAR ENDED 31 DECEMBER 2011

1. STATEMENT OF SIGNIFICANT ACCOUNTING POLICIES (CONT'D)

Contributions are made by the association to an employee superannuation fund and are charged as expenses when incurred.(c)

(c) CASH

For the purpose of the Statement of Cash Flows, cash includes cash on hand, at banks and on deposit.

(d) Property, Plant and Equipment

Plant and equipment are measured on the cost basis.

The carrying amount of plant and equipment is reviewed annually by the association to ensure it is not in excess of the recoverable amount from those assets. The recoverable amount is assessed on the basis of the expected net cash flows which will be received from the assets employment and subsequent disposal. The expected net cash flows have not been discounted to present values in determining recoverable amounts.

Depreciation

The depreciable amount of all fixed assets are depreciated on a straight line basis over the useful lives of the assets to the association commencing from the time the asset is held ready for use.

The depreciation rates used for each class of depreciable asset are:

Class of fixed asset	Depreciation rate
Motor Vehicles	22.5%
Office furniture and equipment	9-40%
Office equipment donated	20%


NOTES TO THE FINANCIAL STATEMENTS FOR THE YEAR ENDED 31 DECEMBER 2011

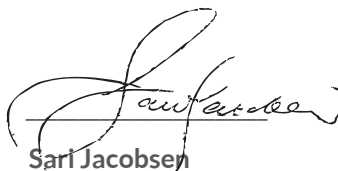
STATEMENT BY MEMBERS OF THE BOARD

In the opinion of the Board the financial report:

1. The board has determined that Country Arts (WA) is a non-reporting entity and the attached financial report is a special purpose financial report prepared for the purpose of advising members and funding bodies of the balance sheet and income and expenditure of Country Arts (WA) in accordance with its constitution.
2. Presents a true and fair view of the balance sheet of Country Arts (WA) Incorporated as at 31 December 2011 and its performance for the year ended on that date in accordance with Australian Accounting Standards, mandatory professional reporting requirements and other authoritative pronouncements of the Australian Accounting Standards Board.
3. At the date of this statement, there are reasonable grounds to believe that Country Arts (WA) Incorporated will be able to pay its debts as and when they fall due.

This statement is made in accordance with a resolution of the Board and is signed for and on behalf of the Board by:


Suzie Haslehurst
Chairperson
Dated: 20 April 2012


Sari Jacobsen
Treasurer
Dated: 20 April 2012

**NOTES TO THE FINANCIAL STATEMENTS FOR THE YEAR ENDED
31 DECEMBER 2011**

1. STATEMENT OF SIGNIFICANT ACCOUNTING POLICIES (CONT'D)

(e) GOODS AND SERVICES TAX (GST)

Revenues, expenses and assets are recognized net of the amount of goods and services tax (GST) except where the amount of GST incurred is not recoverable from the Australian Taxation Office. In these circumstances the GST is recognized as part of the cost of acquisition of the asset or as part of an item of expense. Receivables and payables are stated with the amount of GST included.

(f) Income Tax

The association is deemed a non-profit organization for income tax purposes and has tax exempt status under S. 50-45 of the Income Tax Assessment Act 1997.

(g) COMPARATIVE FIGURES

Comparative figures have been adjusted to conform to changes in presentation for the current financial year.

2. EVENTS SUBSEQUENT TO BALANCE DATE

There were no material events occurring after the reporting date that had a financial effect on the association.

3. RELATED PARTY TRANSACTIONS

No related party transactions occurred during the year.

i. Reconciliation of Cash

For the purposes of the Statement of Cash Flows, cash includes cash on hand and at bank and short term deposits on call, net of outstanding bank overdrafts. Cash at the end of the financial year is as follows for the purposes of the Statement of Cash Flows:



4. CASH FLOW INFORMATION

	2011 \$	2010 \$
Cash on hand and at bank	771,607	1,526,516
(ii) Reconciliation of net income/(expenditure) to net cash provided by/(used in) operating activities		
Net surplus/(deficit)	(6,129)	48,080
Add/(less) non-cash income and expense items:		
Depreciation	7,594	5,722
Future Projects Funds	(41,000)	-
Transfers to/(from) provisions:		
Employee entitlements	(26,828)	12,880
Change in assets and liabilities during the financial year		
(Increase)/decrease in debtors	91,416	13,402
Increase/(decrease) in creditors, accruals, unexpended grants, and other liabilities	(487,086)	(229,657)
(Increase)/decrease in other assets	6,831	(129,951)
Net cash provided by/(used in) operation activities	455,202	(279,524)



Independent Audit Report



TO THE MEMBERS OF COUNTRY ARTS (WA) INCORPORATED

We have audited the financial report, being a special purpose financial report of Country Arts (WA) Incorporated, which comprises the balance sheet as at 31 December 2011 for the year ended, the income and expenditure statement, statement of cash flows, a summary of significant accounting policies, other explanatory notes and the statement by members of the committee.

Committee's Responsibility for the Financial Report

The Committee of the association is responsible for the preparation and fair presentation of the financial report and has determined that the accounting policies described in Note 1 to the financial statements, which form part of the financial report, are consistent with the financial reporting requirements of the Associations Incorporation Act and are appropriate to meet the needs of members. The committee's responsibilities also include designing, implementing and maintaining internal control relevant to the preparation and fair presentation of the financial report that is free from material misstatement, whether due to fraud or error; selecting and applying appropriate accounting policies; and making accounting estimates that are reasonable in the circumstances.

Auditor's Responsibility

Our responsibility is to express an opinion on the financial report based on our audit. No opinion is expressed as to whether the accounting policies used, as described in Note 1, are appropriate to meet the needs of the members and funding bodies. We conducted our audit in accordance with Australian Auditing Standards. These Auditing Standards require that we comply with relevant ethical requirements relating to audit engagements and plan and perform the audit to obtain reasonable assurance whether the financial report is free from material misstatement.

An audit involves performing procedures to obtain audit evidence about the amounts and disclosures in the financial report. The procedures selected depend on the auditor's judgment, including the assessment of the risks of material misstatement of the financial report, whether due to fraud or error. In making those risk assessment, the auditor considers internal control relevant to the entity's preparation and fair presentation of the financial report in order to design audit procedures that are appropriate in the circumstances, but not for the purpose of expressing an opinion on the effectiveness of the entity's internal control. An audit also includes evaluating the appropriateness of accounting policies used and the reasonableness of accounting estimates made by the committee, as well as evaluating the overall presentation of the financial report.

The entity is often concurrently involved with a number of services. It is not practical or cost efficient for the audit to determine whether the allocation of costs over the projects is reasonable. Our examination of the records has not addressed this issue. Accordingly the management allocates expenses to individual services on a basis of subjective approximation

The financial report has been prepared for distribution to members for the purpose of fulfilling the committee's financial reporting obligations under the Associations Incorporations Act WA. We disclaim any assumption of responsibility for any reliance on this report or on the financial report to which it relates to any person other than the members, or for any purpose other than that for which it was prepared.

We believe that the audit evidence we have obtained is sufficient and appropriate to provide a basis for our audit opinion.





Independence

In conducting our audit, we have complied with the independence requirements of Australian professional ethical pronouncements.

Audit Opinion

In our opinion, the financial report of Country Arts (WA) Incorporated presents fairly, in all material respects the balance sheet of Country Arts (WA) Incorporated as at 31 December 2011 and of its income and expenditure statement for the year ended in accordance with the accounting policies described in Note 1 to the financial statements, and the Associations Incorporation Act.

Francis A Jones Pty Ltd

A handwritten signature in black ink, appearing to read 'Daniel Paul Papaphotis', written over a horizontal line.

Daniel Paul Papaphotis
Registered Company Auditor
154 High Street
Fremantle WA 6160



Board of Management & Governance





Board of Management

Chair - Suzie Haslehurst, Broome

(Co-Opted)

Suzie is a WAAPA graduate and has worked in the arts for over twenty years. Prior to moving to Broome with her family in 2001, she was the General Manager of Buzz Dance Theatre.

Since then Suzie has been a passionate advocate and spokesperson for the arts in regional and remote areas. She was the elected Chairperson of the Country Arts WA Board from 2004-2009 and the National President of Regional Arts Australia from 2007-2009. Suzie is currently Chair of the Performing Arts Touring Alliance (PATA) - Australia and most recently, she was appointed to the Not-For-Profit Reform Council by the Federal Minister for Social Inclusion.

Suzie has been the Chief Executive Officer at Magabala Books Aboriginal Corporation, a national Indigenous publishing house based in Broome that enables Indigenous creators to tell their stories. She has been in this position since 2002.

Vice Chair - Simon Clarke, Albany

(Regional Community Organisation)

Simon is a professional theatre artist with 16 years experience in performance, dramaturgy, writing and direction.

A graduate of the Victorian College of the Arts (Bachelor of Dramatic Art - Acting), he was a Board Member of the Performing Art Society (Blue Room Theatre) and has worked extensively in professional theatre with companies such as Southern Edge Arts, the largest youth performing arts company in regional WA. Simon champions regional arts as the chairperson for WA's Regional Arts Fund panel.

At the start of his second year as a Country Arts WA director, he was appointed Vice Chair of the board, and the Chairperson of the Regional Art Development panel. Simon is passionate about the value of the regional communities and the ability of the quality arts experience to make significant contributions to the development of those communities.

Treasurer - Sari Jacobsen, Geraldton**(Individual)**

For much of the last decade Sari has worked in, or volunteered for, not-for-profit agencies and Local Government Authorities. This has provided Sari with a good understanding of governance, compliance and financial responsibilities as well as grant application and acquittal processes.

Sari has been involved with the Arts and Cultural Development Council of Geraldton for the past eight years, two as the elected Treasurer and currently providing financial and planning advice to the organisation.

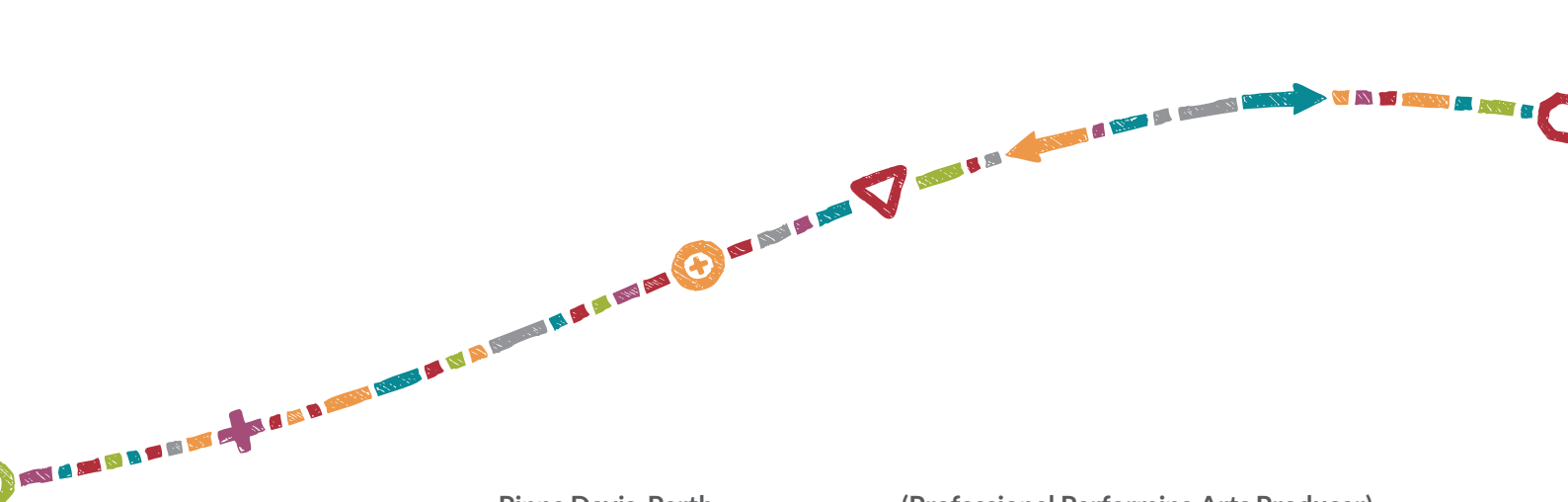
Sari has a Bachelor of Visual Arts and has studied Arts and Cultural Management at a post-graduate level. She has a broad interest in the arts with a special enthusiasm for visual arts. Sari has been a member of the Country Arts WA Board since 2008.

Secretary - Katherine McLean, Perth (Professional Performing Arts Producer)

Katherine is the General Manager of Barking Gecko Theatre Company, Western Australia's leading theatre company for young audiences. Katherine has also been involved in the performing arts since she was very young, working as a performer on stage and television.

Over the last eight years has built a career as a project manager/producer in festivals, the arts and community cultural development. She was integral in the establishment of the Abbotsford Convent, a major community arts and cultural precinct situated and was a member of the Community Cultural Development Advisory Panel of the City of Melbourne. Her first introduction to Western Australia was as the Manager of the Million Puppet Project, as part of UNIMA Congress, Conference and International Puppetry Festival (2008) where she was fortunate to experience the passion and beauty of the arts in regional communities.

She is passionate about how the arts can benefit young people and dedicates her working life to her four great loves: the arts, community, the environment and story. Katherine was appointed to the Board in April 2010.



Pippa Davis, Perth

(Professional Performing Arts Producer)

Pippa is the general Manager of Buzz Dance theatre, taking working shops and performances to the regions. She is always looking for ways to expand Buzz Dance's reach and presence.

Previously, she was Artistic Administrator at Black Swan State Theatre Company and was responsible for their touring program and managing their youth outreach program, Operation Pilbara.

She spent 8 years in the Pilbara, ranging from one man shows and cabarets to the Australian Ballet. Pippa was chairperson of Karratha Youth Theatre and created several festivals as well as opened an outdoor cinema. She was secretary of Circuitwest and the WA representative on APACA for several years.

Pippa grew up in the country so she has a good understanding of the problems faced by the regions and is interested in all aspects of the arts, not just performance.

Peter Rupp, Perth

(Co-Opted)

Peter Rupp (Bsc FCA FLWA) is a Chartered Accountant and currently practises as an Audit Partner with Deloitte in Perth. Peter was educated and commenced his working life at Deloitte in the UK with several periods of travel in Europe and the USA before settling in Perth with his family in 2003.

As a Fellow of the 2010 Leadership WA Programme, Peter has a deep appreciation of the opportunities that exist in Regional Western Australia and believes that the arts provides a means to enhance the development of community across the state.

Peter is a classically trained musician, playing both piano and clarinet, and a passionate supporter of the arts.





Kira Fong, Broome

(Co-Opted)

Kira joined Goolarri Media Enterprises in 2003 bringing with her eight years of experience in marketing, public relations and event management. Kira ran her own business in Perth from 1997 prior to her returning to her hometown of Broome to take up a position at Goolarri.

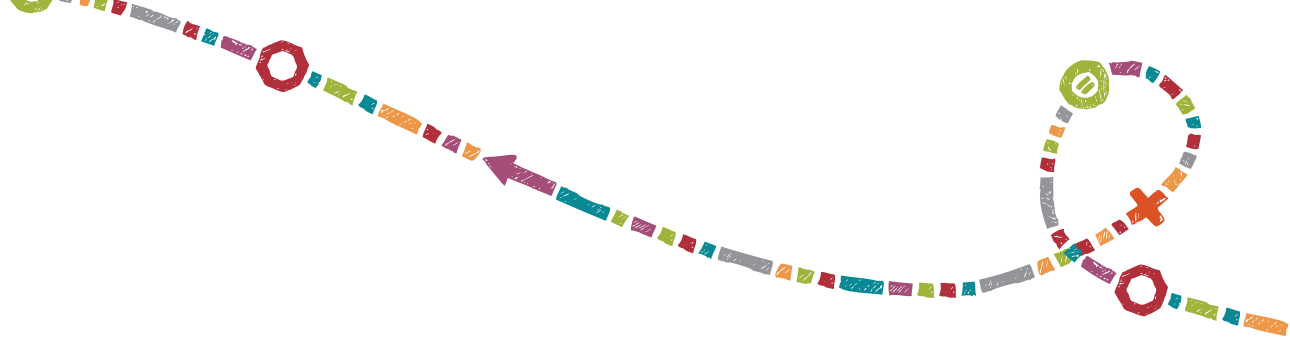
As the Music, Marketing and Event Project Manager from 2003 to 2009, Kira managed and trained the events, marketing and music development teams. During her time at Goolarri Media Kira has been responsible for the development and project management of a number of high profile events including the Kullarri NAIDOC Festival, the Kimberley Indigenous Performing Arts Showcase, Shinju Matsuri, Gimme Fest and the planning and enhancement of Goolarri's Indigenous Music Strategy working with industry partners around Australia.

Kira has also been the driving force in developing a number of new initiatives including the internationally recognised Kimberley Girl. In June 2009, Kira's hard work, dedication and passion for the industry saw her promoted to the role of Chief Operations Officer overseeing 28 staff in television, radio, training, new media, events, music and administration whilst continuing to focus on the organisation's strategic planning.

Fay O'Brien, Ravensthorpe

(Regional Community Organisation)

After a career in primary teaching spanning 40 years in Western Australia, with sojourns in England Canada and New Guinea, Fay retired in 1989. It wasn't quite the end of her teaching career. With her husband Peter, she completed CELTA studies and went off to Slovakia to teach English at the Bratislava campus of Washington State's City University. Besides enjoying the novelty of teaching adult students, living and travelling in Europe offered a wonderful opportunity to experience the arts in forms of music, sculpture, ballet and opera.



Returning to WA and ‘real’ retirement in Hopetoun, Fay discovered a very active and enthusiastic group in the Ravensthorpe Regional Arts Council. This volunteer group is responsible for bringing an extensive number of performances to the region for the community’s enjoyment and are forever willing to support local artists.

In joining Ravensthorpe Regional Arts Council (RRAC) Fay became involved in arts programs, taking the lead in some projects, such as the residency of Indigenous author Kim Scott. It was through her association with RRAC that Fay learned of the wonderful work being done throughout Western Australia by Country Arts WA, and was thrilled to have the opportunity to become a member of the board, in the capacities of volunteer and senior citizen.

Ross Beckett, Esperance

(Regional Performing Arts Venue)

Born in Kalgoorlie and educated in Kununurra, Dowerin and Perth, Ross Beckett joined the RAAF in 1984 as a Radar Operator. After leaving the RAAF, in 1992 Ross studied at The Western Australian Academy of Performing Arts and embarked on a career in commercial radio. Working in Northam, Bridgetown, Wollongong (NSW), Esperance, Albany and Launceston (TAS), the radio industry has given Ross a broad and diverse range of experiences, dealing with people from various artistic communities as well as the general public.

Since February 2009, Ross has run the Esperance Civic Centre - Esperance performing arts venue. Currently, Ross serves as a board director for CircuitWest and Esperance Community Arts and believes with his experience and diverse background he can bring enthusiasm and a different point of view to the Board of Country Art WA.





Kate Fielding, Warburton

(Individual)

Based in the remote desert community of Warburton, Kate generates community cultural development opportunities across the Ngaanyatjarra Lands through the Shire of Ngaanyatjarraku in partnership with diverse community organisations.

Kate is passionate about collaborative, playful and diverse arts practice. She is a hip-hop performer and graphic novelist. Kate's collaborative graphic novel explores the early contact history of her country hometown on Victoria's coast and is currently published as a serial by MUPMeanjin.

Kate has operated a creative history enterprise specialising in publications, youth voices and exhibition content for the past decade and has managed diverse client, staff and community teams. Her professional experience includes research and curatorial roles with the History Council of Victoria, National Museum of Australia, Heritage Victoria, Museum Victoria, Koorie Heritage Trust and the National Archives of Australia.

Appointed to the Board in April 2010, Kate is keen to share the rich perspectives and unique practice of arts workers from remote Western Australia with a broader regional organisation.

Doone McAlary, Margaret River

(Regional Community Presenter)

Doone has been the administrator for Arts Margaret River since late 2007 and is a member of the CircuitWest network. Arts Margaret River presents an annual program of events that supports performing, visual, literary and cinematic arts.

Doone has studied graphic design and fine art and later in life museum practise. The arts have always been integral to her life and she is a visual art practitioner (when time allows), ardent reader and avid theatre goer. Doone was appointed to the Board in April 2010.



Tony Shaw, Perth

(Co-Opted)

Tony is a Wongutha man born on a reserve in Laverton, Western Australia. A child of the stolen generation, he was raised on mission settlements and has spent most of his life in the northeastern Goldfields.

Tony has dedicated his life to improving the health and wellbeing of Indigenous people. He is an authority on corporate Indigenous programs in Western Australia and runs a consulting business called Indigenous Services Australia. Through this business Tony provides a range of services including Cultural Awareness Training Programs, Indigenous Recruitment, Corporate Representation and Team Building Programs. Tony has provided services to many blue chip companies including Xstrata Nickel, Goldfields Limited, Downer EDI, Jabiru Metals, Apex Minerals, St Barbara Mines, Agnew Gold, Minara Resources, Mincor Resources and many others.

Tony has been co-opted to Board in 2009 to provide guidance in Indigenous arts and culture.

Annette Stokes, Kalgoorlie

(Co-Opted)

Annette Stokes is a senior woman of the Wongutha Tribe of the Goldfields of Western Australia. Annette was born in Kalgoorlie and spent her early life travelling around the Goldfields with her family living in the bush, and on stations. She trained as an early childhood education worker, then as an Aboriginal health worker, moving into research in 1995. She was awarded the Fiona Stanley Medal for Medical Research in 2005.

Annette is a musician, artist and community arts worker in Kalgoorlie.

Christine Elaine, Northam

(Regional Community Organisation)

Already a strong contributor to regional arts, Christine's passion and drive is demonstrated with the active role that she takes on a day to day basis within her hometown of Northam and its surrounding districts as far up as Mt Magnet.

Christine is an avid champion of regional arts by serving on a number of committees and panels. These include the Shire of Northam Cultural Precinct Advisory Committee, the Department of Culture and the Arts Peer Assessment Panel among others.

A past nominee of the Ros Bower award, Christine is an independent visual artist, the Vice Chair for the Northam Heritage Forum and a volunteer tourism officer at the Cultural Precinct. She is constantly driven by her belief that community arts need to provide core aims for every Shire to address, to enable accessibility and empower healthy creative communities across all art forms and cultures.



Role of the Board

Country Arts WA's Constitution requires that a Board of 10 people is elected from the organisation's membership by the members. The Board members are representatives of the five membership categories. To ensure that regional representation remains high, the Constitution requires that a minimum 70% of elected Board members must be based in regional Western Australia.

The membership categories ensure that the Board is made up of regional arts peers who reflect the membership and the key operational structures of the organisation. All decisions about the allocation of the organisation's funds are recommended by the Finance Sub-Committee, the Touring Assistance Panel and Regional Arts Development Panel and are endorsed by the Board at regular meetings.

The Board is ultimately responsible for the strategic planning, operations, management and performance of the organisation. In discharging this responsibility, the Board delegates authority to senior management whose role it is to manage the organisation in accordance with the directions and policies set by the Board. The Board monitors the activities of senior management in their performance of delegated duties.

Responsibilities of the Board include the following:

- Determining organisational strategies, policies and guidelines for the successful performance of the organisation in the present and the future;
- Monitoring overall performance and financial results and adopting annual budgets;
- Accountability to members;
- Ensuring that risk management procedures and compliance and control are in place and operate effectively;
- Monitoring the performance and conduct of senior management and ensuring adequate succession plans are in place; and
- Ensuring the organisation continually builds an honest and ethical culture.



Board Structure

- * In accordance with the Constitution the Board has 10 members elected by the organisation's membership. These members come from five different member categories;
- * The Board is able to co-opt members with specialist skills and background;
- * The Board itself elects office bearers that make up the Executive;
- * Board members are elected for a two-year term and can then stand for re-election. Members must stand down following three consecutive terms; and
- * The Board delegates responsibility to a number of sub-committees in order to monitor the complexity of the organisation's operations. The Board makes appointment to these sub-committees based on Board members' area of expertise and interest.

Ethical Standards

The organisation established a Code of Conduct that addresses matters of integrity and ethical standards. All Board members and staff are expected to abide by the Code of Conduct at all times that includes behaviour in relation to:

- * Organisational values;
- * Professional conduct;
- * Customer service;
- * Confidentiality and continuous disclosure;
- * Anti-discrimination and harassment;
- * Standards of workplace behaviour and equal opportunity; and
- * Procedural fairness.

All Board and staff members are required to read and sign the Code of Conduct when they join the organisation.



Financial Reporting

Country Arts WA has a Finance Sub-Committee whose role is to supervise the ongoing financial management of the organisation. Its members are Paul MacPhail (Chair and Treasurer until September 2009), Pina Caffarelli CPA ACA (Chair and Treasurer from September 2009), Catherine West, Sari Jacobsen and Simon Clarke. The organisation's membership appoints a suitably qualified external auditor at each Annual General Meeting. The auditor for the 2009 period was Francis A Jones.

Risk Management

The organisation is committed to identifying and managing areas of significant risk to protect the safety and interests of members, clients and staff. Arrangements currently in place include:

- Regular financial and program reporting;
- Procedures to manage risks as set out in the organisation's Risk Management Plan;
- Comprehensive insurance; and
- Utilisation of specialist skills when required. The organisation's co-option policy is an example of this strategy.

Board Performance

The performance of the Board is reviewed by the Executive annually. The efficiency, effectiveness and operations of the Board are continuously subject to informal monitoring by the Chair and the Board as a whole.

Remuneration

Board membership is voluntary and no sitting fees are paid. All costs associated with Board meetings, including travel, accommodation and meals, are paid by the organisation.

Staff remuneration is reviewed annually and increases are based on performance appraisals and the organisation's ability to fund salary increases.



Staff



Chief Executive Officer	Jessica Machin
Acting Chief Executive Officer / General Manager	Paul Mac Phail
Acting General Manager / Operations Coordinator	Nerida Glanfield
Finance Officer	Suzanne Fielding
Operations Assistant / Operations Officer	Gemma Robins
Operations Assistant	Leah Worthington
Manager, Performing Arts Touring	Philippa Maughan
Performing Arts Touring Officer	Sarah Vaglivello
Performing Arts Touring Officer	Monique Boucher
Touring Project Officer	Simon O'Leary
CircuitWest Audience Development Officer	Dolores Kinsman
Regional Arts Development Manager	Carina Lauder
Regional Arts Development Officer	Jessica Anderson
Regional Arts Development Assistant	Celia Ipsen
Regional Youth Arts Development Officer	Jade Stott
Gascoyne Regional Arts Development Officer	Theaker von Ziarno
Public Relations and Marketing Manager	Kelly Jennings
Digital Marketing Assistant	Matt McEwen
Aboriginal Art Centre of Western Australia Coordinator	Christine Scoggin
Aboriginal Art Centre of Western Australia Support Officer	Sofie Lines



Staff Farewelled in 2011

Communications Officer	Megan Roberts
Marketing Manager	Sarah Thomas-Bird
Marketing Manager	Josie McGraw
Aboriginal Art Centre of Western Australia Support Officer	Sofie Lines
OPEN YOUR EYES Project Manager	Katrina Thomson
OPEN YOUR EYES Creative Producer	Mark Lennard
OPEN YOUR EYES Coordinator	Catherine McLernon
OPEN YOUR EYES Production Manager	Shane Webster
OPEN YOUR EYES Musicircus Coordinator	Brandon Bartlett
OPEN YOUR EYES Yamaji Coordinator	Bianca McNair
OPEN YOUR EYES Yamaji Coordinator	Tracey Green

Staff on Parental Leave in 2011

Chief Executive Officer	Jessica Machin
Regional Youth Arts Development Officer	Wendy Carmichael



Members



At December 2011 Country Arts WA had 160 financial members.
The members in each category were:

Life Members

Ian Haines (2002)
Dale Johnson (2003)
Olwyn Williams (2003)
Gail Allison (2004)
Rose Murray (2008)
Andy Farrant (2008)
Suzie Haslehurst (2008)
Katie Harford (2010)

INDIVIDUAL

Richard Apel, Wheatbelt
Jane Bandurski, Wheatbelt
Mignon Birch, South West
Joan May Campbell, Great Southern
Annette Carmichael, Great Southern
Del Cole, Gascoyne
Marina Couchman, Pilbara
Margaret Dowdell, Great Southern
Wendy Duncan MLC, Goldfields-
Esperance
Kate Fielding, Goldfields-Esperance
Heather Gee, Goldfields-Esperance
Iris Guilmartin, Wheatbelt
Verna Harding, Wheatbelt
Rose Holdaway, Midwest
Louise Howden-Smith, Perth
John Hyde MLA, Perth
Robin Inkpen, West
Sari Jacobsen, Midwest

Daniel Jenks, Midwest
Julie Luxton, Perth
Clarissa Machin, Perth
Jenine Mackay, Perth
Matthew Manahan, Queensland
Robert McCaffrey, Wheatbelt
Mick Murray, South West
Nan Rickards, Midwest
Diana Roberts, South West
Vivienne Robertson, Great Southern
Peter Rupp, Perth
Peter Russell, Perth
Annette Sellers, Midwest
Kaitlyn Seymour, Great Southern
Joel Smoker, Perth
Sharon Squires-Hansen, Perth
David Templeman MLA, Peel
Max Trenorden MLA, Wheatbelt
Sandi Woo, Kimberley



PROFESSIONAL PERFORMING ARTS PRODUCER

Abmusic Aboriginal Corporation, Perth

Artrage, Perth

Barking Gecko Theatre Company, Perth

Black Swan State Theatre Company, Perth

Buzz Dance Theatre, Perth

Deckchair Theatre Company, Perth

Performing Lines WA, Perth

Performing Lines WA, Perth

Perth Theatre Company, Perth

Spare Parts Puppet Theatre, Perth

Theatre Kimberley, Kimberley

West Australian Aboriginal Dance Company, Perth

West Australian Ballet, Perth

Yirra Yaakin Aboriginal Corporation, Perth

REGIONAL COMMUNITY ORGANISATIONS

Albany Art Group, Great Southern

Arts & Culture Christmas Island, Indian Ocean Territories

Arts and Cultural Development Council, Midwest

Arts and Culture Goldfields Association, Goldfields-Esperance

Arts Culture Peel, Peel

ARTS Narrogin Inc, Wheatbelt

Avon Valley Arts, Wheatbelt



Balingup Progress Association, South West
Beverley Art Gallery Society, Wheatbelt
Big hART Inc, Wheatbelt
Boddington Community Resource Centre, Peel
Borden Pavilion Committee, Great Southern
Boyup Brook Community Resource Centre, South West
Boyup Brook Country Music Club, South West
Bunbury Musical Comedy Group, South West
Cervantes Cultural Committee, Wheatbelt
Dalwallinu Creative Arts Inc, Wheatbelt
Dardanup Bull & Barrel Festival, South West
Desart Inc, Northern Territory
Exmouth Cultural Art Centre, Gascoyne
Geographe Arts Bureau Inc, South West
Geraldton-Greenough Regional Arts Gallery, Midwest
Goolarri Media Enterprises, Kimberley
Gwoonwardu Mia, Gascoyne
Harvey Recreation and Cultural Centre Inc, South West
Hopetoun Community Resource Centre Inc, Goldfields-Esperance
Inspirational Community Arts Network Inc, Wheatbelt
Jabat Dance, Pilbara
Jurien Bay Community Resource Centre, Wheatbelt
Kalbarri Arts & Craft Group Inc, Midwest





Karingal Neighbourhood Centre, Pilbara
Kojonup Visitor Centre, Great Southern
Kondinin Artists Group Inc, Wheatbelt
Lake Grace Artists Group, Wheatbelt
Lake Grace Development Association, Wheatbelt
Mandorla Art Award Committee, Perth
Maruku Arts, Northern Territory
Members of the Arts Centre (MAC), Goldfields-Esperance
Moora Fine Arts Society Inc, Wheatbelt
Museums Australia WA, Perth
Nannup Arts Council, South West
Nannup Music Club, South West
Newman Visitor Centre, Pilbara
North West Cape Exmouth Aboriginal Corporation, Gascoyne
Northam Theatre Group, Wheatbelt
Northampton Old School Community Initiative Inc, Midwest
Northcliffe Arts Association, South West
Puranyangu Rangka Kerrem (Aboriginal Radio), Kimberley
Quindanning Community Hall Inc, Wheatbelt
Ravensthorpe Regional Arts Council, Goldfields-Esperance
South West Opera Company, South West
Southern Edge Arts, Great Southern
Southern Forest Arts, South West



Stage Left Theatre Troupe, Goldfields-Esperance
Stirling Street Arts Centre, South West
The Cannery Arts Centre, Goldfields-Esperance
Tjarlirli Art Indigenous Corporation, Northern Territory
Warmun Art Centre, Kimberley
Wongan Arts Society, Midwest
Wongutha Birni Aboriginal Corporation, Goldfields-Esperance

REGIONAL COMMUNITY PRESENTERS

Arts Margaret River, South West
Cocos Club Inc, Indian Ocean Territories
Dandaragan Repertory Club, Wheatbelt
Dumbleyung Theatre Club, Wheatbelt
Kimberley Performing Arts Council, Kimberley
Pemberton Visitor Centre, South West
Shark Bay Arts Council, Gascoyne
Theatre '8', Midwest

REGIONAL VENUES

Carnarvon Civic Centre, Gascoyne
Esperance Civic Centre, Goldfields-Esperance
Goldfields Arts Centre, Goldfields-Esperance
Mandurah Performing Arts Centre, Peel
Matt Dann Cultural Centre, Pilbara
Queens Park Theatre, Midwest
Walkington Theatre, Pilbara





SUBSCRIBERS

City of Albany, Great Southern

City of Bunbury, South West

City of Mandurah, Peel

City of Swan, Perth

Mid West Development Commission, Midwest

Shire of Broome, Kimberley

Shire of Chittering, Wheatbelt

Shire of Christmas Island, Indian Ocean Territories

Shire of Cue, Midwest

Shire of Dalwallinu, Wheatbelt

Shire of Dundas, Goldfields-Esperance

Shire of Exmouth, Gascoyne

Shire of Kellerberrin, Wheatbelt

Shire of Kulin, Wheatbelt

Shire of Menzies, Goldfields-Esperance

Shire of Perenjori, Midwest

Shire of Roebourne, Pilbara

Shire of Shark Bay, Gascoyne

Shire of Tammin, Wheatbelt





Shire of Three Springs, Wheatbelt
Shire of Upper Gascoyne, Gascoyne
Shire of Wagin, Wheatbelt
Shire of Wyndham, East Kimberley
Shire of Yilgarn, Goldfields-Esperance
Shire of York, Wheatbelt
Town of Port Hedland, Pilbara



Our Supporters

The State of Western Australia

Country Arts WA receives funds from the State of Western Australia through the Department of Culture and the Arts and Lotterywest.



Government of **Western Australia**
Department of **Culture and the Arts**



Australian Government

The Regional Arts Fund is an Australian Government initiative supporting the arts in regional, rural and very remote/isolated Australia. Country Arts WA manages the program in Western Australia.



Australian Government
Regional Arts Fund

Corporate Partner



Country Arts WA is a member of:

Regional Arts Australia www.regionalarts.com.au

The National Compact www.nationalcompact.gov.au

Chamber of Arts and Culture www.cacwa.org.au





Funding Partners and Project Partners



Media Partners



Service Partners





Open Your Eyes Supporters

Event Partners



Project Partners



Regional Air Travel Partner



Print Partner



Special thanks to the City of Geraldton Regional Art Gallery and West Australian Museum - Geraldton



COUNTRY+ ARTS+WA=

PERTH OFFICE

➡ PO Box 7012 Cloisters Square, WA 6850

➡ Level 1 King Street Arts Centre, 357 Murray Street, Perth WA 6000

⚠ **PHONE** (08) 9200 6200 **FAX** (08) 9200 6201

REGIONAL WA FREECALL 1800 811 883

GASCOYNE OFFICE

➡ PO Box 781 Carnarvon, WA 6701

⚠ **PHONE** (08) 9941 7016

🌐 **WEB** www.countryartswa.asn.au **EMAIL** info@countryartswa.asn.au